



First Hill Park

Concept Design

september 2016

Project Team

Alex Hudson
FHIA Director

Douglas Holtom
FHIA Activation Coordinator

Ashley Rinehart
Cascade Court, Steering Committee

Bob Terrell
FHIA Board and First Hill Resident, Steering Committee

Julianne Patterson
Washington Trust for Historic Preservation, Steering Committee

Mary Ellen Hudgins
FHIA Board Chair and First Hill Resident, Steering Committee

Mark Brands
Site Workshop

Liz Browning
Site Workshop

Aubrey Weeks
Site Workshop

Alana MacWhorter
Site Workshop

Pamela Kliment
Seattle Parks and Recreation

Ed Pottharst
Seattle Department of Neighborhoods

Acknowledgements

This project would not have been possible without the energy, enthusiasm, and expertise of the following community members, organizations, and volunteers. We thank you for your time and passion in guiding the future of this important place for the enjoyment of generations to come.

Ann Ormsby, First Hill Resident

Barbara Rhoe, First Hill Resident

Betsy Braun, Virginia Mason Medical Center

Catherine Ramsden, First Hill Resident

Ellie Tobkes, First Hill Resident

George Winn, Urban Planning Volunteer

Gordon Werner, FHIA Board and First Hill Resident

Jim Erickson, FHIA Board and First Hill Resident

Mac Ward, Event Photographer and First Hill Resident

Mary Merlino, First Hill Resident

Michael Shiosaki, Seattle Parks and Recreation Department

Randy Wiger, Seattle Parks and Recreation Department

Swedish Medical Center

Therapeutic Health Services

Top Pot Donuts

Washington Trust for Historic Preservation

Cascade Court

First Hill Plaza



TABLE OF CONTENTS

Introduction	1
--------------------	---

Part 1: The Concept Plan

Concept Goals.....	3
Site Plan	4
Diagrams.....	5
Views	6
Materials	7

Part 2: The Park and Process

Site Context	9
Existing Park Conditions	10
Community Outreach	12
Engagement Framework	14
Focus Groups	15
Public Events	16

Part 3: Cost and Schedule

Project Cost Summary.....	23
Project Schedule.....	24

Appendix

Detailed Cost Estimate	26
Public Event Boards	28
Public Comment Tracking	44

Introduction

Public spaces matter.

Parks and other public gathering places provide communities with valuable formal and informal meeting spaces, offer respite from the intense urban environment, and bring people together across racial, economic, and social divides. In First Hill, the vibrant density of our urban neighborhood is met with the reality that we simply do not have enough public open space to meet the needs of our growing population, particularly young families. Despite ongoing efforts to acquire additional park land for First Hill and investment in adaptive streets programs, the fact remains that our neighborhood misses the City's goals for public open space by 4.5 acres. With these pressures in mind, every square foot of existing public open space on First Hill needs to meet its highest potential.

First Hill Park is one of the neighborhood's few parks. Built in 1978, it is a 0.25 acre green space with mature Yellowwood trees, benches, two picnic tables, and plantings. It's bound by boxwood hedges and neighbored by the Stimson-Green Mansion, and the residential communities of Sutton Place, Panorama House, The Summit at First Hill, and Cascade Court. It's a contemplative, formal space frequented by neighbors passing through with dogs, medical workers eating lunch, and clients from the neighboring methadone

clinic. There are few activating amenities, and many feel that the space falls short of its potential.

The First Hill Improvement Association (FHIA) heard loud and clear from neighbors that it was time to re-envision First Hill Park. A successful grant application to the Seattle Department of Neighborhoods funded a community-led visioning process to develop a new design for First Hill Park. Partnering with the Seattle Parks and Recreation, the project aims to make First Hill Park a vibrant, welcoming, and safe open space in our neighborhood where people of all ages and abilities can relax and play; and which increases public safety; contributes to neighborhood wellness and connectivity; and builds community.

“The project aims to make First Hill Park a vibrant, welcoming, and safe open space in our neighborhood where people of all ages and abilities can relax and play...”

By providing opportunity for people to take ownership of their community and develop a common vision for First Hill's future, and ultimately, creating a high quality space for

people to gather, this project promotes community engagement and civic pride for generations to come. This place, and the process, matter.



Part 1

The Concept Plan



Concept Goals

Activate and engage the
back of the park

Extend the park to the street edge

Encourage circulation through
the park

Create open, flexible space for performance
and passive activities

Provide a variety of seating
and gathering options

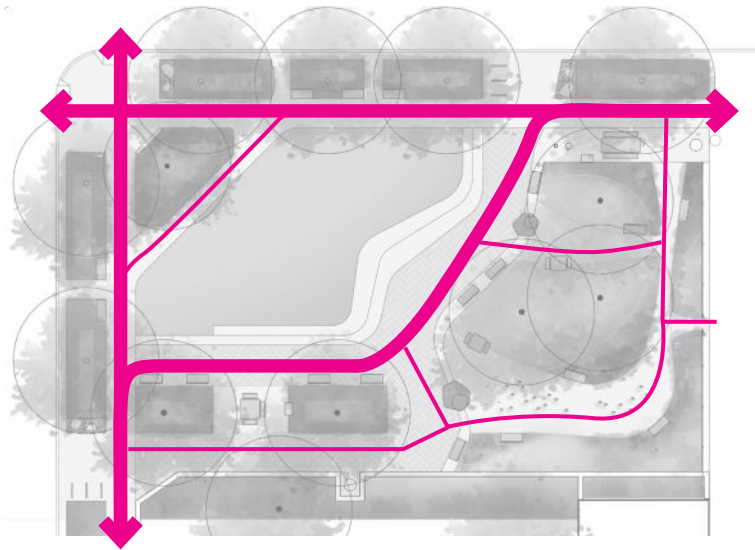
Preserve and enhance
existing tree canopy



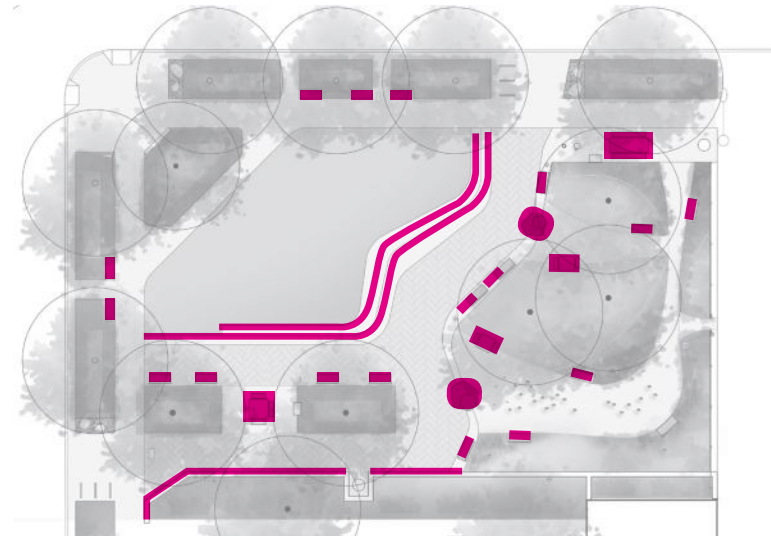
Site Plan



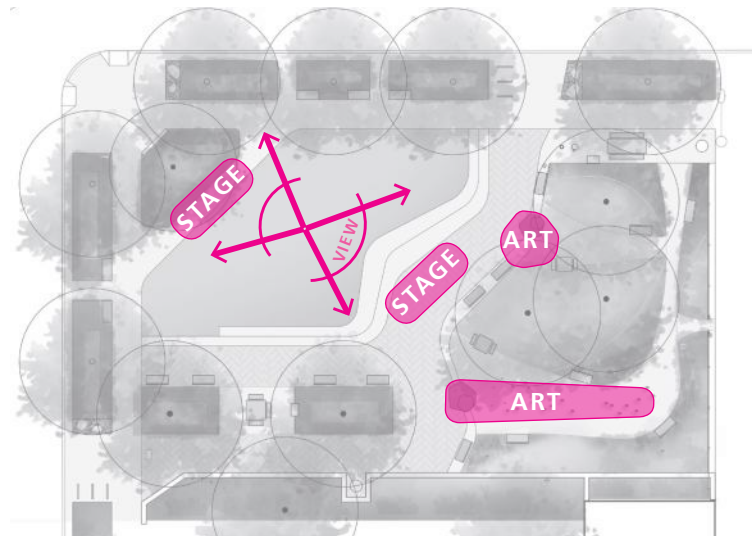
Diagrams



Circulation



Seating



Performance/Play



Views



Looking Northeast from Minor Avenue



Looking Southwest from University Street



Materials

FURNISHINGS



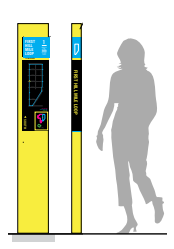
Pedestrian Lights
Existing and Landscape Forms Alcott



Benches & Receptacles
Victor Stanley Framers Modern



Bike Racks
Sportworks Oahu No Scratch



Community Kiosk/First Hill Mile Marker

ART/PLAY



Playable Sculpture



Vertical Play Environment



Playable Sculpture



Multi-Age Group Swing

SURFACING



Concrete Seat Steps



Existing and Reclaimed Brick Paving



Concrete Sidewalks



Wood Chip Surfacing



Part 2

The Park and Process



Site Context



First Hill Park is nestled in the mid-rise residential blocks of Seattle's First Hill neighborhood, at the corner of Minor Ave and University Street. University Street is a future Seattle Neighborhood Greenway. First Hill suffers from a dearth of public open space, with only 6% of the land as public open space, leaving the community short of its open space goals by 4.5 acres.

Other neighborhood open spaces include Freeway Park, and Yesler Park. Freeway Park is a civic park that links Interstate 5 and connects downtown, the Washington State Convention Center, and First Hill. Yesler Park is a larger neighborhood park under development as part of the redevelopment of Seattle Housing Authority's Yesler Terrace Project, and will open in 2017.

The First Hill neighborhood is characterized by its high rise residential zoning, mature tree canopy, close proximity to downtown, historic buildings, and high concentration of medical establishments. Neighborhood residents have one of the lowest rates of car ownership in Seattle.

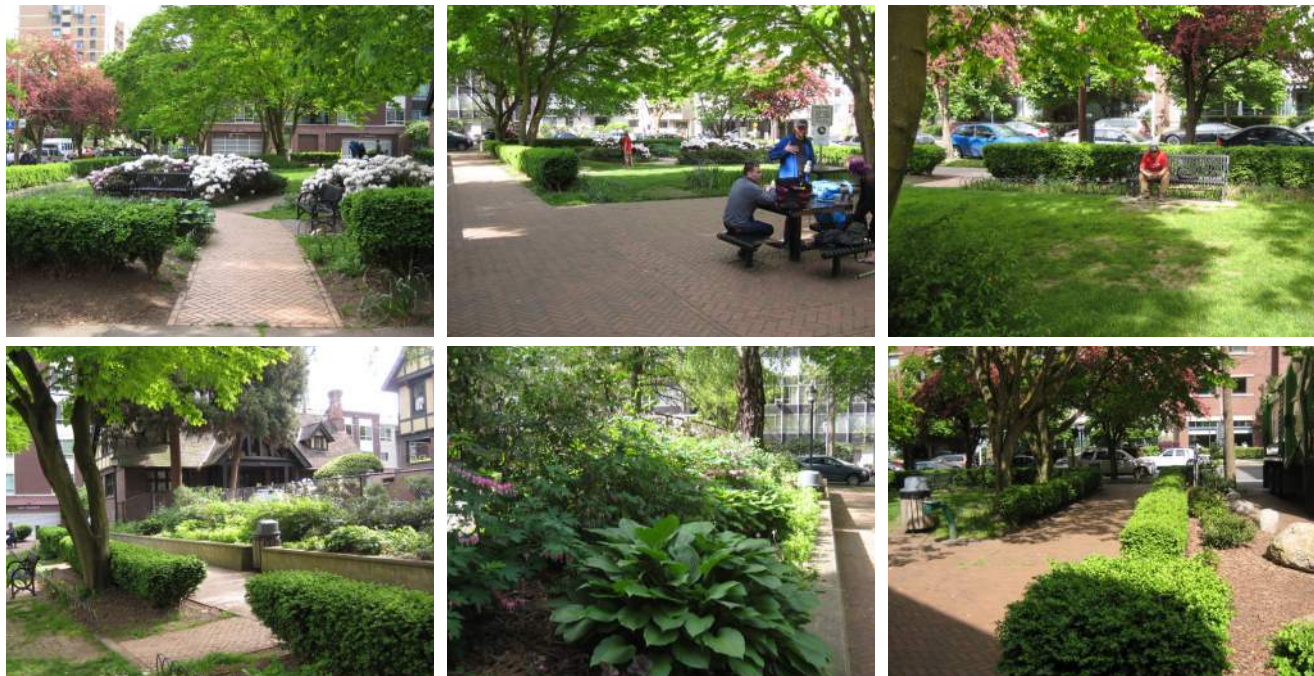


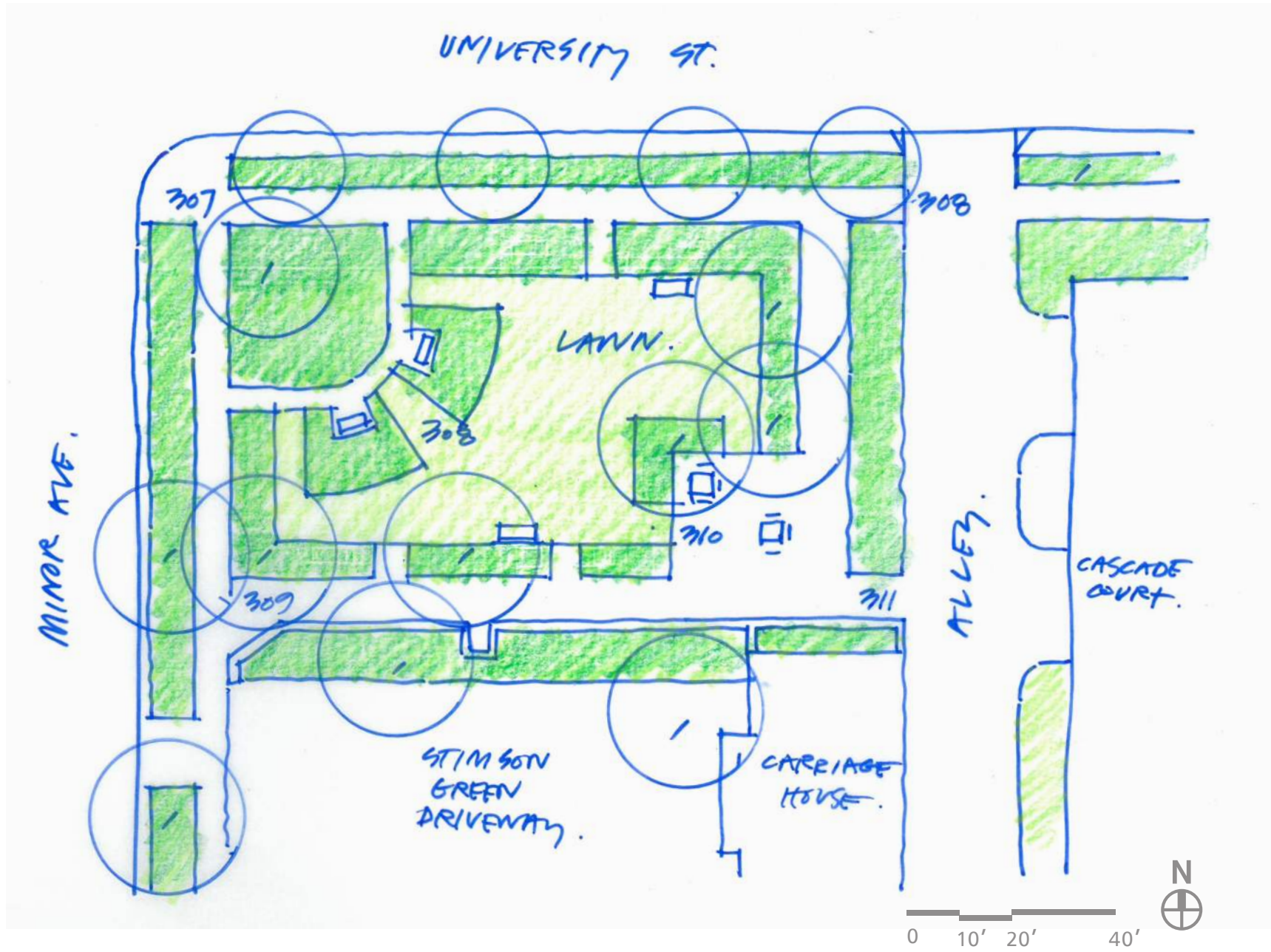
Existing Conditions

First Hill Park Site Photos



First Hill Park was acquired in 1972 and developed in 1978 as a neighborhood park. Amenities include an open lawn, brick paving and patio, formal plantings, and beautiful Yellowwood canopy trees - the only ones of their kind in Seattle's public realm. A public drinking fountain exists in the park. The Stimson-Green Mansion on the south edge of the Park (seen in the background) is a historic landmark, and home to the Washington Trust for Historic Preservation.





Community Outreach

Come to Us = Public Events

We Go to You = Focus Groups

Digital = Text the Park and Email

Over the course of the summer, FHIA and Site Workshop, in collaboration with Seattle Parks and Recreation and the Department of Neighborhoods, led a community outreach process to develop a concept plan for improvements to First Hill Park.

The public engagement process emphasized the voices of underrepresented groups including renters, low-income residents, medically-assisted populations, homeless people, and children and families. Public open meetings, neighborhood

focus groups, and virtual commentary were developed in a framework that the outreach team explained as “come to us, we go to you, and digital.”

Review sessions with the Parks Department insured buy-in from development and maintenance staff. The following pages document the public events, workshops, and feedback received over the course of the process. Additional documentation is included in the Appendix.

5 Events
592 Total Unique Responses
10 Total (Active) Listening Hours
34 Digital Engagements

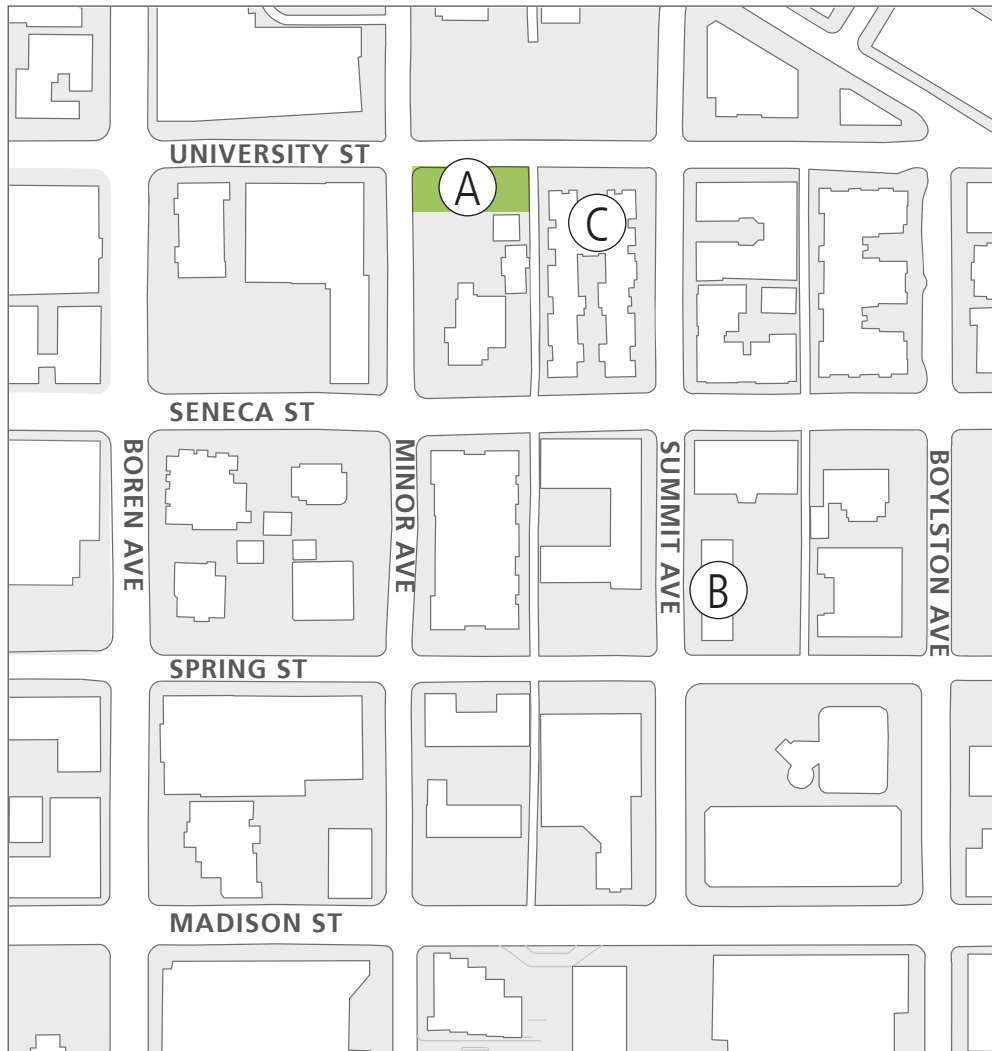




“ The park plays well with the historical context and provides a pleasant respite for current residents. Let’s keep the park in tune with the culture of the place and have it differentiated from the mega playgrounds and heavily programmed spaces • I like the flow that goes through the park from University to Minor. The current design doesn’t flow....it is sort of a dead end. • Preserve the brick! • Create a conversation between different age groups and demographics • Better lighting! • The sun is hot in the summer so we elderly tend to head for the shade when we take a break from walking. Make sure that some of the benches will be shaded. • The more we can do for kids the better • I like the idea of the play as art • Nobody protects a place like a mother watching her kids! • Trees are very important to our densely populated city • Leave as much green as possible! ”



Community Engagement Framework



Come to Us

- A** First Hill Park Public Events
University St. & Minor Ave
Tuesday, May 24, 2016
6-8pm
Tuesday, June 21, 2016
6-8pm
Tuesday, August 2, 2016
6-8pm

We Go to You

- B** Therapeutic Health Services Focus Group
1116 Summit Ave
Wednesday, May 25, 2016
10-11am
- C** Cascade Court Apartments Focus Group
1201 Summit Ave
Thursday, June 2, 2016
4:30-5:30pm



Focus Groups

We Go to You



Therapeutic Health Services

Therapeutic Health Services hosted a focus group in May as part of a regularly scheduled family and parent support group meeting. In a room filled with young parents who are working to stay clean and sober, a lively discussion ensued and a long list of ideas for First Hill Park was brainstormed.

The parents noted that illegal and nefarious behavior in the Park are deterrents to their use; they asked for a park where their children are safe from crime and where the behaviors they are trying to eliminate from their lives are not present. Some parents didn't realize that a public outdoor amenity was available to them so near the THS clinic.

Ideas for the new park concept ranged from traditional play equipment and amenities that are friendly for small children, to elements to increase safety such as eliminating hiding spots and increasing lighting, to event programming ideas and design with "feng shui."

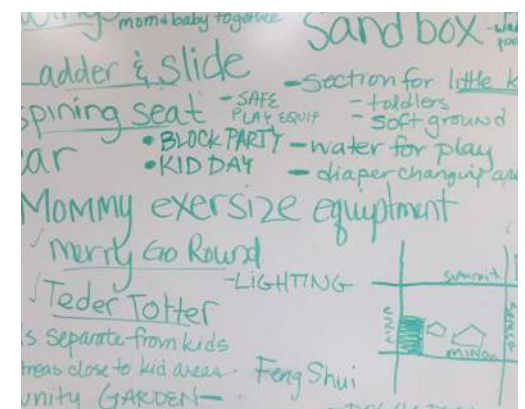


Cascade Court Residents

As First Hill Park's next door neighbor, Cascade Court is home to residents who are the "eyes on the park." At an open-house style event held in the complex's center patio, residents reviewed image boards from the first public event and engaged in conversation with each other and representatives from Site Workshop.

Several residents told of the importance of the park as a "jewel," a truly valued green space with historic character in this urban neighborhood. Some long-term residents told of raising their children in the neighborhood and the ongoing need for quality and safe open spaces. There was support for non-disruptive events in the park, in particular acoustic (non-amplified) music.

Concerned residents relayed accounts of drug dealing and along the alley of the park, including a perceived lack of monitoring by police. A heartfelt discussion ensued about how park redesign could aid in encouraging lawful behavior without reducing the highly valued green character of this cherished open space.



Public Event at the Park #1

Gathering Ideas

FHIA invited the community to attend a series of visioning sessions in the park. The first event allowed people to express their thoughts about a series of topics. Imagery showing different programming and design solutions were presented, and people were asked to “vote” for their preferences with green and red dots. Additional comments were collected on maps of the park. See the Appendix for the full boards and comment tracking from the public meetings.

E A T

- 11** responses in support of **barbeques**
- 9** responses in favor of **food vendors**
- 6** responses in favor of a **community garden**

P L A Y

- 32** responses in support of **play for all ages**
- 19** responses in favor of **small kids play equipment**

R E L A X

- 8** responses in support of adding **benches**
- 7** responses in favor of **built-in seating**
- 5** responses expressed concern for appropriate **seating for elderly users**



“There needs to be more seating.”



Come to Us

P E R F O R M

14 responses in favor of **acoustic musical events**



M O R E

- 32** responses expressed concern for **safety in the park**
- 17** responses expressed concern with **poor maintenance**
- 17** responses in support of more **lighting**
- 16** responses in favor of removing **hedges**
- 10** responses in favor of keeping the **lawn area**
- 10** responses in favor of keeping **trees**
- 9** responses in support of **dogs in the park**
- 7** responses in favor of extending park into the **right-of-way**
- 6** responses in support of integrating **Stimson-Green historical context**



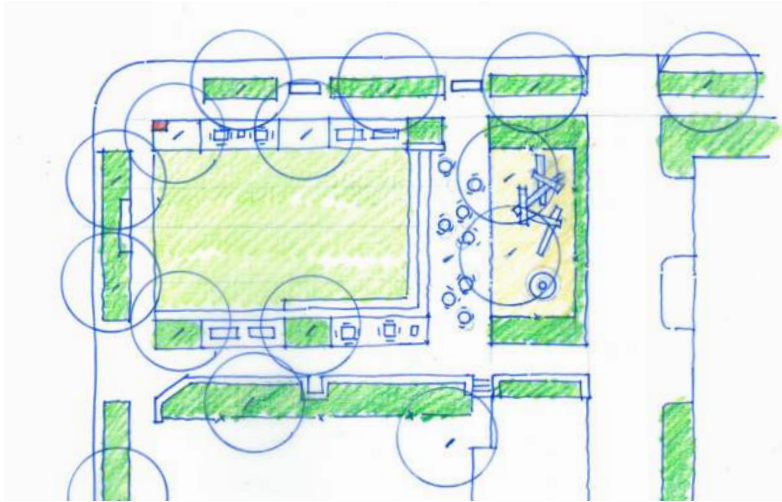
First Hill Park

Public Event at the Park #2

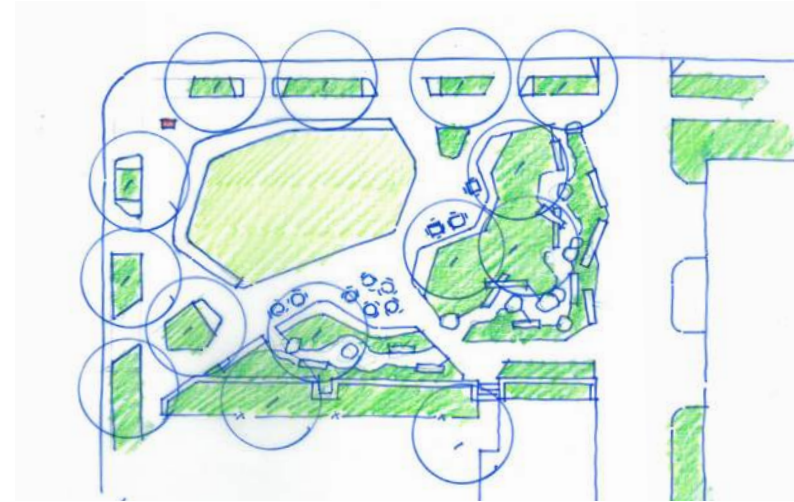
Come to Us

Exploring Options

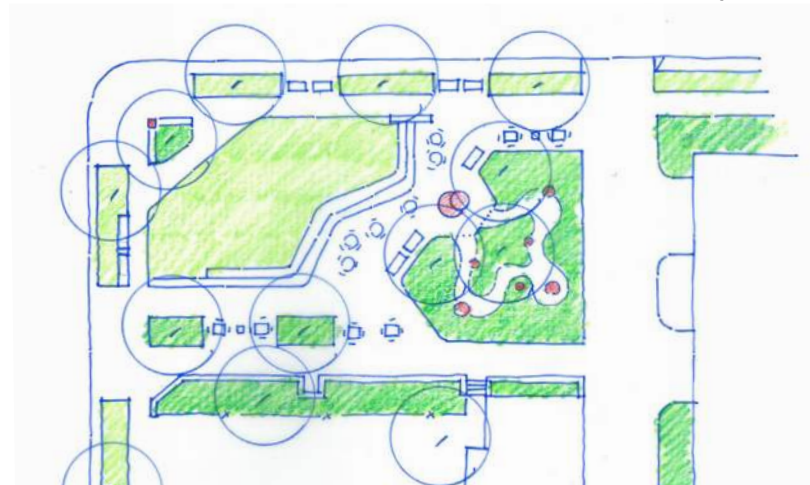
The second public event presented three design options for public comment. Stations were set up around the park with a plan and associated imagery. Neighbors were invited to circulate through the stations and comment on the plans through conversations and post-it notes.



Concept A



Concept B



Concept C



First Hill Park



“I love the garden path.”

“Would like quiet areas for reading.”

“Wonderful diagonal walk. Really opens up the park!”

“Play should be artful.”



First Hill Park

Public Event at the Park #3

Sharing the Concept Plan

A final public event unveiled a concept design plan for the park. Alex Hudson of FHIA and Mark Brands of Site Workshop presented the design concept and thanked the community for their attendance, sharing ideas, and support of the process. Comments were collected through conversation and post-it notes.

Come to Us



FIRST HILL PARK CONCEPT PLAN

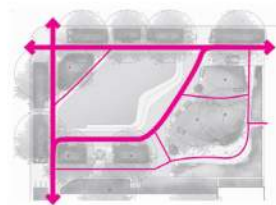


Legend

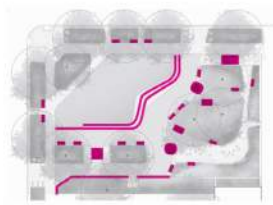


CONCEPT GOALS

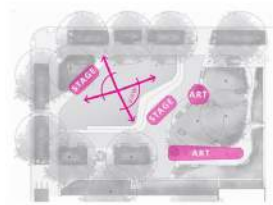
- Activate and engage the **back of the park**
- Extend the park to the **street edge**
- Encourage **circulation** through the park
- Create open, flexible space for **performance and passive activities**
- Provide a variety of **seating and gathering options**
- Preserve and enhance existing **tree canopy**



Circulation



Seating



Performance/Play



Part 3

Costs and Schedule



Project Cost Summary

An initial cost estimate has been calculated for the concept design; the overall breakdown of costs is summarized below. See the appendix for a full summary of costs.

EST. CONSTRUCTION COSTS

SITE PREPARATION	\$60,000
SITE UTILITIES	\$90,000
SITE IMPROVEMENTS	\$275,000
<hr/>	
SUB-TOTAL	\$425,000

EST. SOFT COSTS

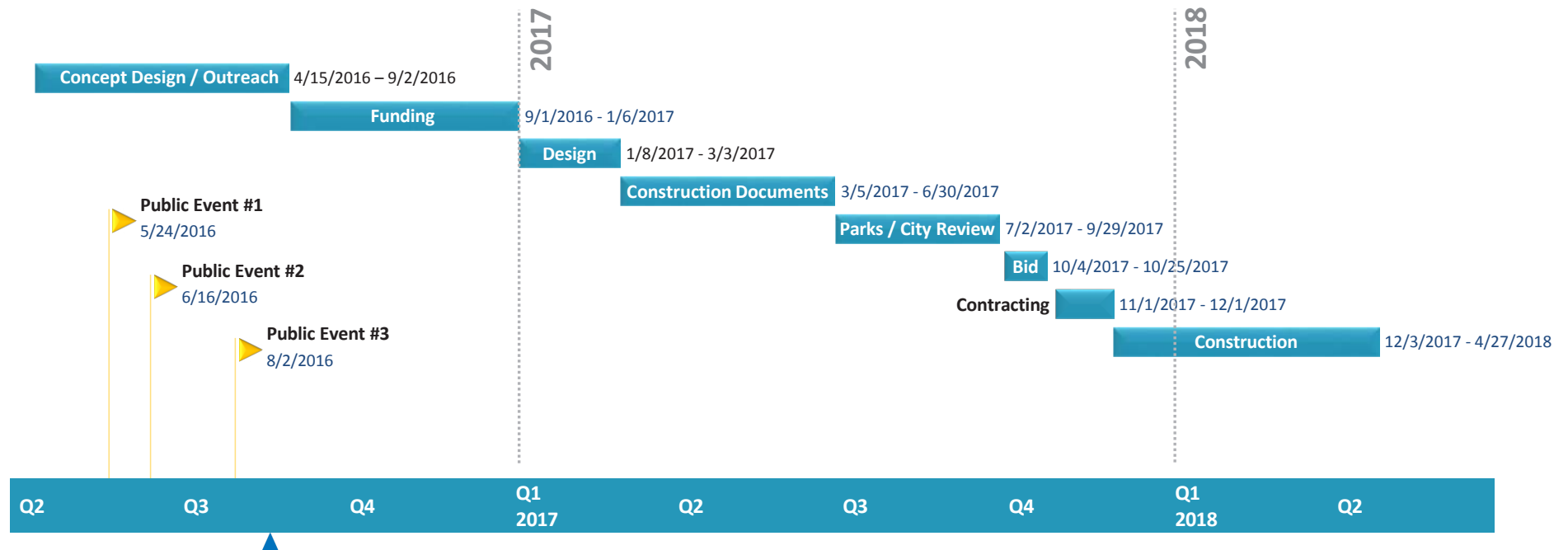
SUB-TOTAL	\$225,000
-----------	-----------

EST. PROJECT COST

CONSTRUCTION COST	\$425,000
SOFT COST	\$225,000
<hr/>	
TOTAL	\$650,000

Project Schedule

The project is working towards opening a newly renovated park in the late Spring or early Summer of 2018. The schedule below outlines the necessary stages of design to reach this goal. Next steps are gathering funding and developing the design for construction documentation and permitting.



Appendix

BASE BID IMPROVEMENTS

Project Size	11,500 SF
Bid Date:	TBD
Duration	TBD
Construction Budget	TBD

General Contractor Markups

General Conditions:	8%
Overhead & Profit:	11%
Estimating Contingency	23%
Escalation:	5%

No.	Description	Quantity	Unit of Measure	Unit Cost	Total Estimated Raw Cost	Base Bid Cost w/GC markups	Add #1 Art/Play Element	Add #2 Seat Plinths
	General Conditions / TESC							
	Mobilization	6%	PRCT		\$11,402	\$11,402		
	Security fencing (275lf x \$.40/mo =\$110mo)	4	MO	\$110.00	\$440	\$647		
	Construction Access	1	EA	\$2,500.00	\$2,500	\$3,675		
	Allowance for Erosion Control	1	ALLOW	\$1,500.00	\$1,500	\$2,205		
	Silt Fence	275	LF	\$5.00	\$1,375	\$2,021		
	Catch Basin/Inlet Protection	2	EA	\$300.00	\$600	\$882		
	Tree Protection Fencing, hog fuel, etc.	1	LS	\$5,000.00	\$5,000	\$7,350		
	Subtotal				\$22,817	\$28,182	\$0	\$0
	Site Clearing & Demolition							
	Remove existing furnishings: benches, fencing, trash cans, etc.	1	ALLOW	\$5,000.00	\$5,000	\$7,350		
	Misc. utility removal / capping	1	ALLOW	\$2,500.00	\$2,500	\$3,675		
	Pavement Removal - sidewalk (ROW)	2,125	SF	\$2.00	\$4,250	\$6,248		
	Pavement Removal - concrete	50	SF	\$2.00	\$100	\$147		
	Planter Fencing Removal	300	LF	\$2.00	\$600	\$882		
	Brick Pavement Reclamation	1,995	SF	\$3.00	\$5,985	\$8,798		
	Stripping - 3" depth, haul from site	30	CY	\$22.00	\$660	\$970		
	Tree removal - street trees	5	EA	\$300.00	\$1,500	\$2,205		
	Subtotal				\$20,595	\$30,275	\$0	\$0
	Earthwork							
	Excavation - general cut/fill	100	CY	\$6.00	\$600	\$882		
	Subtotal				\$600	\$882	\$0	\$0
	Wet Utilities - Storm Drainage, Water, Sewer							
	Storm Drain	1	ALLOW	\$10,000.00	\$10,000	\$14,700		
	Sanitary Sewer (drinking fountain)	1	ALLOW	\$3,000.00	\$3,000	\$4,410		
	Water Service	1	ALLOW	\$1,500.00	\$1,500	\$2,205		
	Subtotal				\$14,500	\$21,315	\$0	\$0
	Electrical							
	Power / WIFI Station	1	ALLOW	\$10,000.00	\$10,000	\$14,700		
	Site power	1	ALLOW	\$10,000.00	\$10,000	\$14,700		
	Site lighting	5	EA	\$5,000.00	\$25,000	\$36,750		
	Subtotal				\$45,000	\$66,150	\$0	\$0
	Hardscape - Flatwork & Surfacing							
	Brick Paving - Mortar Set	1,250	SF	\$15.00	\$18,750	\$27,563		
	Concrete paving - park	440	SF	\$6.00	\$2,640	\$3,881		
	Concrete paving - 2x2 sidewalk (ROW)	2,200	SF	\$6.00	\$13,200	\$19,404		
	Concrete paving - flush curb	160	SF	\$12.00	\$1,920	\$2,822		
	Soft path (decomposed granite or wood chips)	1,165	SF	\$5.00	\$5,825	\$8,563		
	Subtotal				\$42,335	\$62,232	\$0	\$0

No.	Description	Quantity	Unit of Measure	Unit Cost	Total Estimated Raw Cost	Base Bid Cost w/GC markups	Add #1 Art/Play Element	Add #2 Seat Plinths
	Hardscape - Vertical							
	Concrete seat steps	480	SF	\$12.00	\$5,760	\$8,467		
	Concrete cheek wall	2	CY	\$500.00	\$1,000	\$1,470		
	Landscape fencing with flush curb	540	LF	\$25.00	\$13,500	\$19,845		
				Subtotal	\$20,260	\$29,782	\$0	\$0
	Site Structure and Furnishings							
	Custom Long Table and Benches	1	EA	\$4,000.00	\$4,000	\$5,880		
	Victor Stanley Benches - (ROW)	5	EA	\$2,500.00	\$12,500	\$18,375		
	Victor Stanley Benches - PARK	13	EA	\$2,500.00	\$32,500	\$47,775		
	Parks Standard Picnic Table	3	EA	\$1,500.00	\$4,500	\$6,615		
	Parks Standard BBQ	2	EA	\$300.00	\$600	\$882		
	Bike Rack	6	EA	\$400.00	\$2,400	\$3,528		
	Drinking Fountain	1	EA	\$2,000.00	\$2,000	\$2,940		
	Trash receptacles	3	EA	\$1,000.00	\$3,000	\$4,410		
	Info Kiosk	1	EA	\$1,500.00	\$1,500	\$2,205		
	Custom Fence	60	LF	\$200.00	\$12,000	\$17,640		
	Rainbow sign	1	EA	\$2,500.00	\$2,500	\$3,675		
				Subtotal	\$77,500	\$113,925	\$0	\$0
	Custom Features / Art							
	Custom seat elements	2	EA	\$25,000.00				\$50,000
	Art/Play Allowance	1	ALLOW	\$100,000.00			\$100,000	
				Subtotal	\$0	\$0	\$100,000	\$50,000
	Irrigation							
	Irrigation System Materials + Labor	6,240	SF	\$2.00	\$12,480	\$18,346		
	Backflow Device & Gate Valve in Conc Box	1	EA	\$2,500.00	\$2,500	\$3,675		
	Master valve, flow sensor, QCV, etc.	1	EA	\$300.00	\$300	\$441		
	Controller	1	EA	\$7,500.00	\$7,500	\$11,025		
				Subtotal	\$22,780	\$33,487	\$0	\$0
	Planting							
	Pet relief areas (stone and rover rock)	3	EA	\$250.00	\$750	\$1,103		
	Imported topsoil - lawn + plantings	115	CY	\$28.00	\$3,220	\$4,733		
	Mulch - Arborist Chip	45	CY	\$30.00	\$1,350	\$1,985		
	Fine grading, tilling & prep - 8-12" depth	6,200	SF	\$0.08	\$496	\$729		
	Trees - (ROW)	6	EA	\$500.00	\$3,000	\$4,410		
	Shrubs and Groundcovers - (ROW)	1,020	SF	\$3.50	\$3,570	\$5,248		
	Shrubs and Groundcovers - PARK	3,445	SF	\$3.50	\$12,058	\$17,725		
	Lawn Hydroseed	1,800	SF	\$0.15	\$270	\$397		
				Subtotal	\$23,964	\$35,226	\$0	\$0
	Construction Base Bid Grand Total				\$290,351	\$421,456	\$100,000	\$50,000

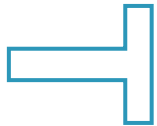
Construction Cost Allowance (CCA) **\$425,000**

Under/Over (red) **\$3,544** **\$150,000**

TOTAL **\$571,456**

Public Event #1 Boards

Numbers indicate positive and negative preference as measured through a "red-dot, green-dot exercise"



First Hill Park



First Hill Park

P
E
R
F
O
R
M

Public Event #1 Boards

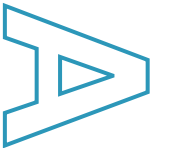
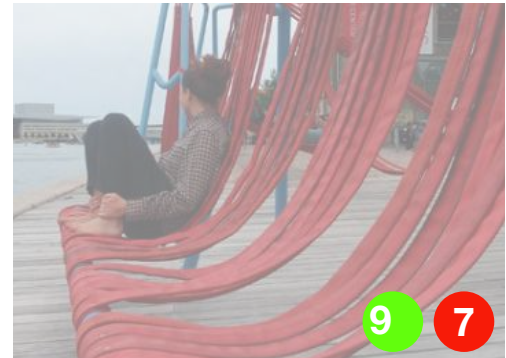


P

L

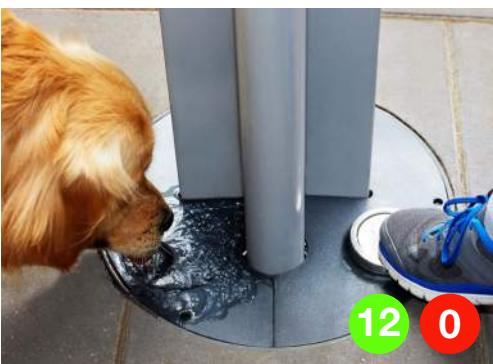
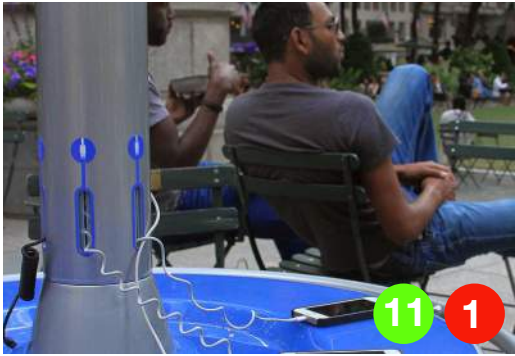
A

Y



First Hill Park

Public Event #1 Boards



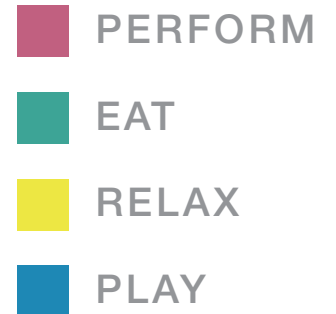
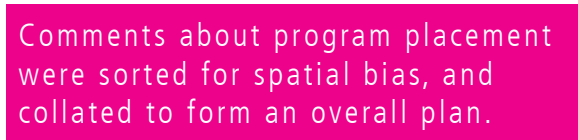
M

O

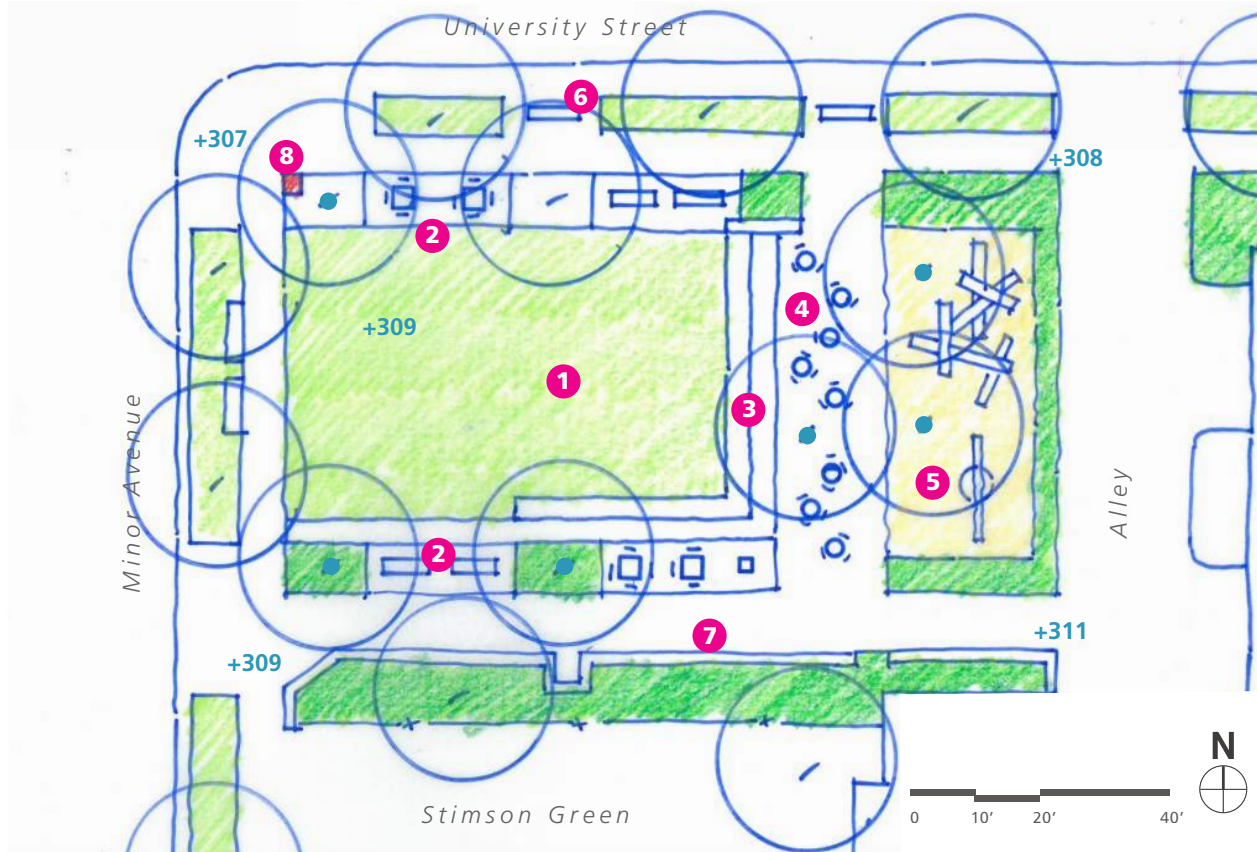
R

M





Public Event #2 Boards



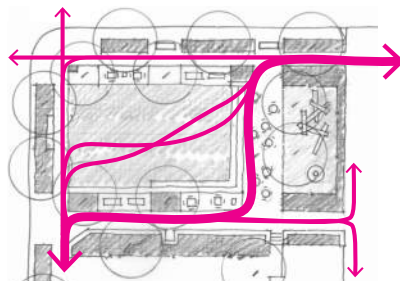
A

Concept Statement

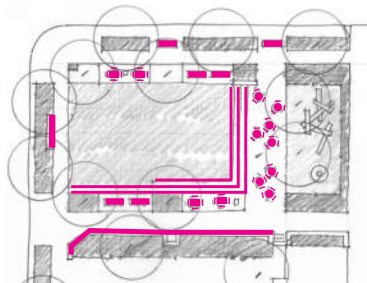
A formal, flexible commons at street level is framed by furniture zones and seat steps allowing for passive activities in an open, sunny location. An upper level terrace activates the back of the park with movable furniture while also acting as a stage for events. An activity zone below the existing tree canopy and adjacent to the alley allows for a playful park element to further activate the back of the park.

Legend

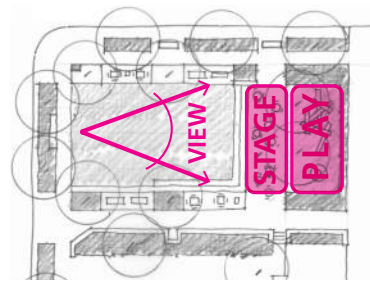
- 1 Commons and flexible lawn area
- 2 Furniture zone: tables, benches, bbq's
- 3 Seat steps
- 4 Upper terrace: movable furniture, performances
- 5 Activity zone: playful sculptures / elements
- 6 Street furniture
- 7 Existing brick and seatwall walkway
- 8 First Hill Mile Marker



Circulation



Seating



Performance / Play



First Hill Park



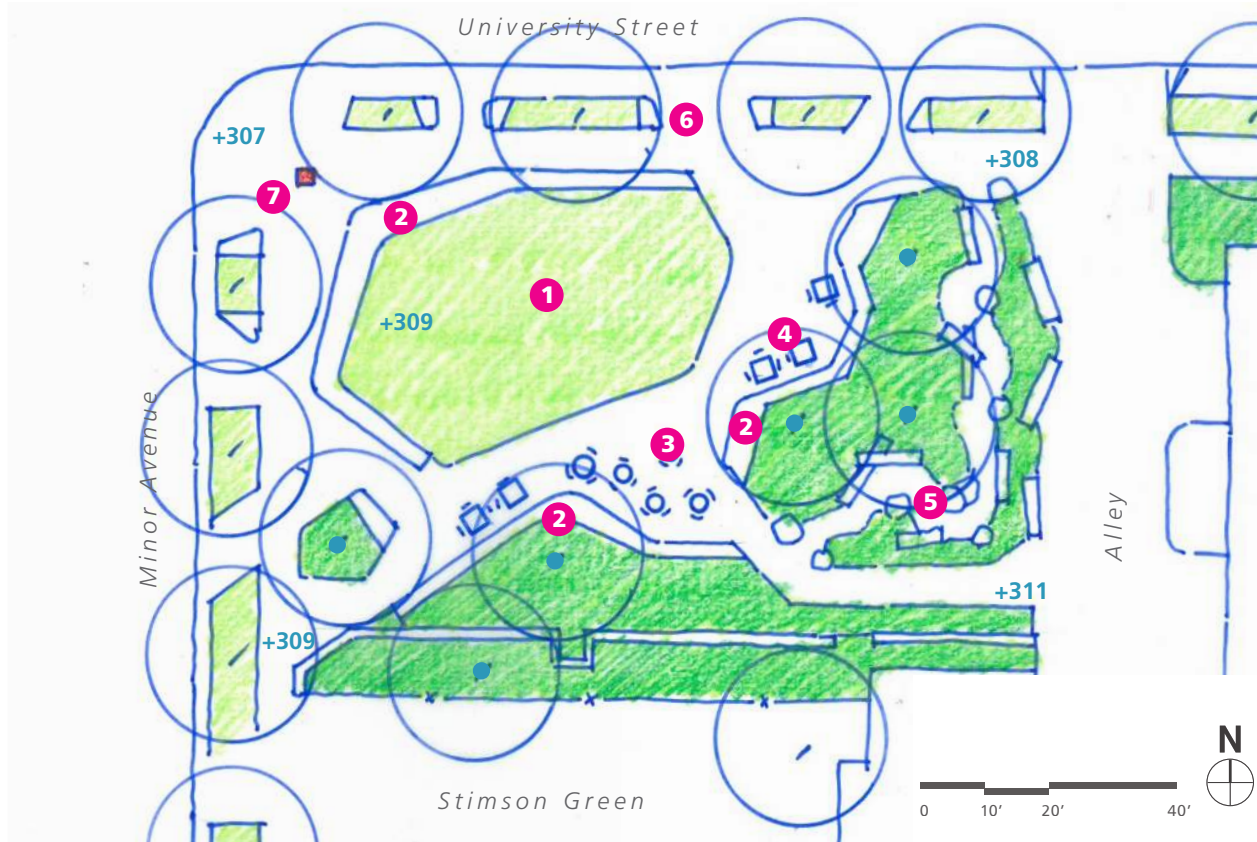
SiteWorkshop
LANDSCAPE ARCHITECTURE

FIRST HILL
IMPROVEMENT ASSOCIATION

A



Public Event #2 Boards



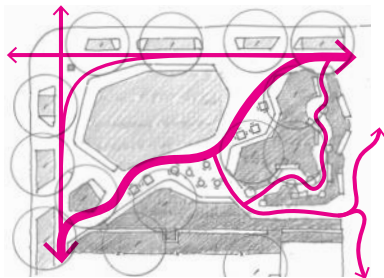
B

Concept Statement

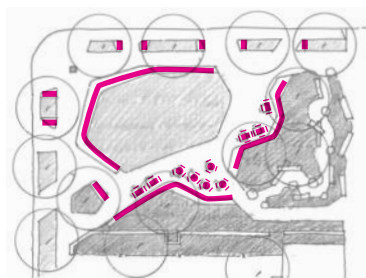
A raised commons creates a seat wall wrapping the corner of the park and creating a perch for people to sit. The commons allows for passive activities and events/performances. The middle of the park is activated by a walkway lined with a variety of seating opportunities including seating walls and movable and fixed furniture. A planting area replaces the existing brick walkway along the Stimson Green and back of the park.

Legend

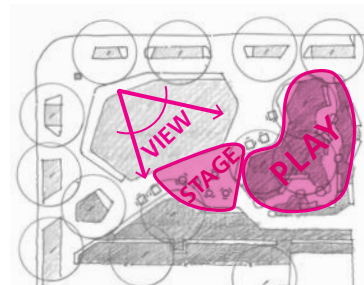
- 1 Commons and flexible lawn area
- 2 Seat walls
- 3 Movable furniture and performance area
- 4 Fixed tables and bbq
- 5 Garden path/adventure walk
- 6 Street furniture
- 7 First Hill Mile Marker



Circulation



Seating

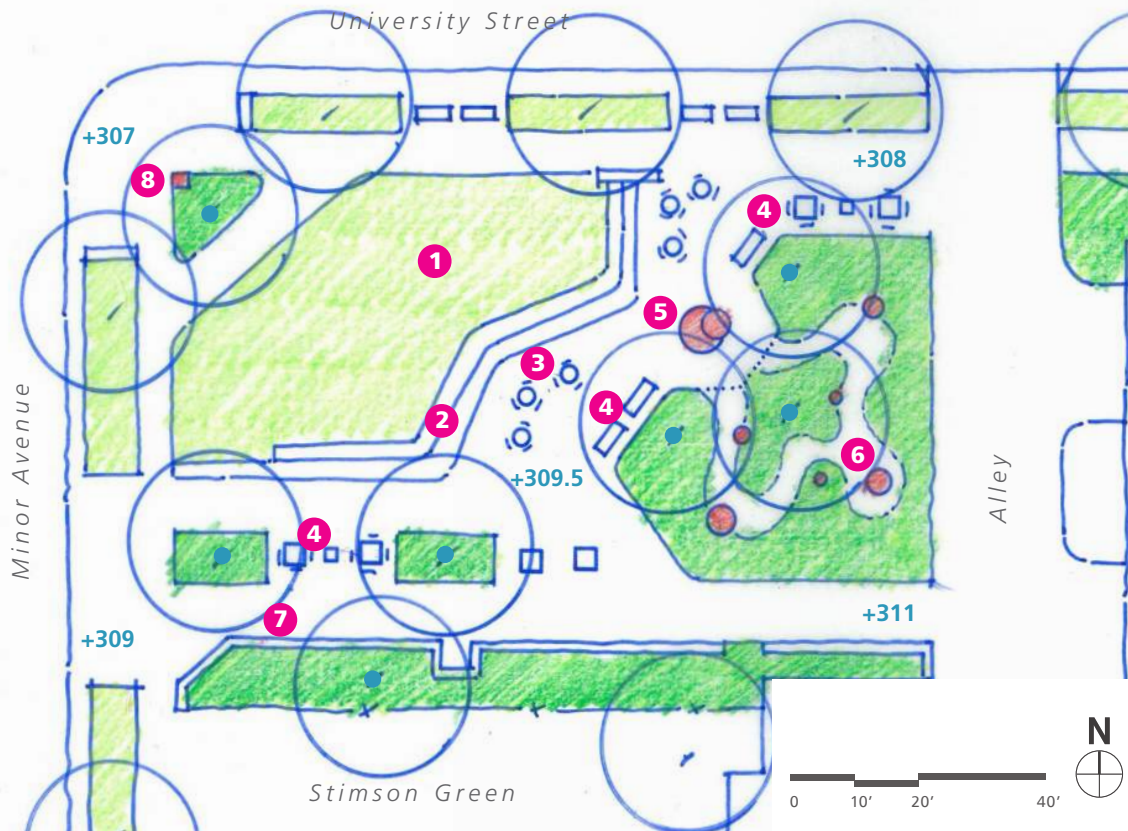


Performance / Play

B



Public Event #2 Boards



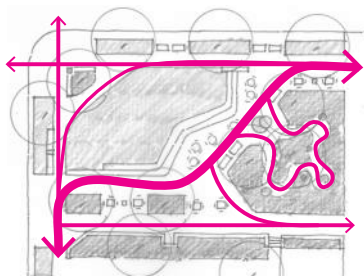
C

Concept Statement

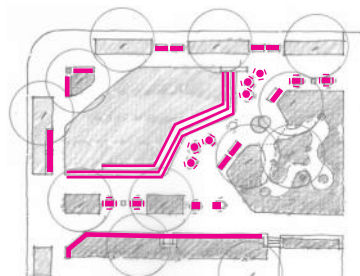
An inviting commons level with the sidewalk embraces the sunny corner of the park. Seat steps playfully transition to an upper level containing a mixture of movable and fixed furniture while also allowing for events/performance to stage in the area. A focal art element and sculpture garden further activate the upper terrace and the back of the park.

Legend

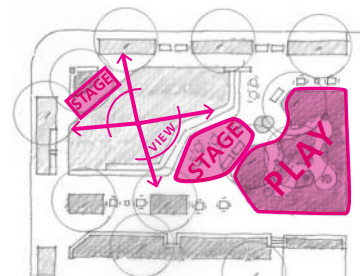
- 1 Commons
- 2 Seat steps
- 3 Movable furniture and performance area
- 4 Fixed furnishings
- 5 Art element
- 6 Sculpture garden
- 7 Existing brick walkway and seat wall
- 8 First Hill Mile Marker



Circulation



Seating



Performance / Play



First Hill Park



SiteWorkshop
LANDSCAPE ARCHITECTURE

FIRST HILL
IMPROVEMENT ASSOCIATION

C



Public Event #3 Boards



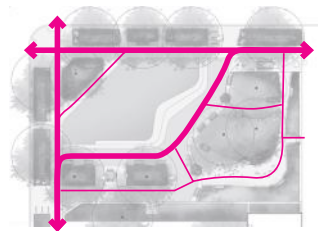
FIRST HILL PARK CONCEPT PLAN

Legend

- Table
- Bench
- Custom Seat Element
- Pedestrian Light
- Pet Relief Area
- Bicycle Racks

CONCEPT GOALS

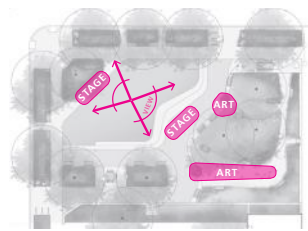
- Activate and engage the **back of the park**
- Extend the park to the **street edge**
- Encourage **circulation** through the park
- Create open, flexible space for **performance and passive activities**
- Provide a variety of **seating and gathering** options
- Preserve and enhance existing **tree canopy**



Circulation



Seating



Performance/Play



Public Event #3 Boards

FURNISHINGS



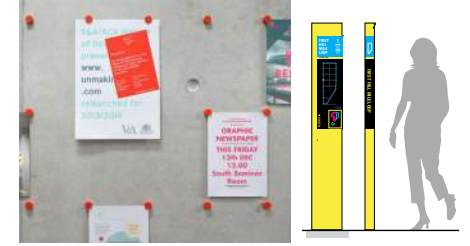
Pedestrian Lights
Existing and Landscape Forms Alcott



Benches & Receptacles
Victor Stanley Framers Modern



Bike Racks
Sportworks Oahu No Scratch



Community Kiosk/First Hill Mile Marker

ART/PLAY



SURFACING



Concrete Seat Steps



Existing and Reclaimed Brick Paving



Concrete Sidewalks



Wood Chip Surfacing

Source	Date	Suggestion
First Hill Valentines	2/11/16	A concert series in the summer
First Hill Valentines	2/11/16	A film festival. Project it on a wall. Maybe the carriage house?
First Hill Valentines	2/11/16	A small gazebo and music
First Hill Valentines	2/11/16	A small off-leash dog area
First Hill Valentines	2/11/16	More community events to celebrate neighbors
Community Clean Up	4/23/16	Bathroom
Community Clean Up	4/23/16	BBQ Cookpits
Community Clean Up	4/23/16	Buskers
Community Clean Up	4/23/16	Firepits
Community Clean Up	4/23/16	Interactive Art
Community Clean Up	4/23/16	Living Room Area
Community Clean Up	4/23/16	Music Stage
Community Clean Up	4/23/16	No Grass
Community Clean Up	4/23/16	Openness and Rain Protection
Community Clean Up	4/23/16	Outlets
Community Clean Up	4/23/16	P-Patch
Community Clean Up	4/23/16	Rain Garden
Community Clean Up	4/23/16	Sculpture for kids to play on
Community Clean Up	4/23/16	Small Dog Area
Community Clean Up	4/23/16	Wi-Fi
Community Clean Up	4/23/16	Winter Use with Warming Elements & Holiday Lights
Text the Park	5/10/16	A low fence (like the one in Madison Park) so that young children can play without the fear that someone may stray into the street. Three new families have moved into our building with young children. Family structures are a changing in First Hill! I do like the concert plans.
Text the Park	5/11/16	Jungle gym/swing set. Safe appealing place for children who live in the high rises near by, like my daughter
Text the Park	5/12/16	Have a bunch of led lights which are solar powered light the park from below
Text the Park	5/16/16	What is park going to do with plants now established at First Hill when changes start? I'd like to buy or donate to get 4 or 5 bleeding hearts, hosts, and bulbs and root systems. I plan to be at one of next park meetings.
Public Meeting #1	5/24/16	More seating
Public Meeting #1	5/24/16	Events/Recitals
Public Meeting #1	5/24/16	Multiple Eating Areas
Public Meeting #1	5/24/16	More plant maintenance
Public Meeting #1	5/24/16	Fulltime Security
Public Meeting #1	5/24/16	No Music
Public Meeting #1	5/24/16	Keep grass//Love the grass
Public Meeting #1	5/24/16	Do dog park
Public Meeting #1	5/24/16	No hammocks--people will take them home
Public Meeting #1	5/24/16	More built-in tables
Public Meeting #1	5/24/16	Love the shade in the park
Public Meeting #1	5/24/16	Park isn't big enough (appropriate) for a lot of these suggestions
Public Meeting #1	5/24/16	Add security

Public Meeting #1	5/24/16	Park ranger like Steinbrueck Park?
Public Meeting #1	5/24/16	Hard surfaces are not appealing
Public Meeting #1	5/24/16	Keep existing trees--favorite part of the park
Public Meeting #1	5/24/16	Hammocks on edge of park would be nice
Public Meeting #1	5/24/16	More greenery
Public Meeting #1	5/24/16	No jungle gym--park too small
Public Meeting #1	5/24/16	No overhang/awning
Public Meeting #1	5/24/16	Love how the park isn't bordered by busy streets; it's tranquil and away from crazy city life
Public Meeting #1	5/24/16	Love movable chairs that aren't bolted or chained down
Public Meeting #1	5/24/16	No fixed furniture
Public Meeting #1	5/24/16	No public art--park too small
Public Meeting #1	5/24/16	No low seating--too hard for seniors
Public Meeting #1	5/24/16	Chairs with arms--good for seniors
Public Meeting #1	5/24/16	Awning (canvas) would be good for rain protection
Public Meeting #1	5/24/16	Encourage hammocks, even if park doesn't provide them
Public Meeting #1	5/24/16	No loose furniture-- I would rather have something integrated into the park
Public Meeting #1	5/24/16	No movable furniture--its looks messy especially when you have to chain it up
Public Meeting #1	5/24/16	Poor maintenance makes grass uninviting
Public Meeting #1	5/24/16	Bandstand would be out of scale for the park (yet a small stage may be appropriate)
Public Meeting #1	5/24/16	Make the park appropriate for reading
Public Meeting #1	5/24/16	Expand the right-of-way into Univerity and Minor, maybe with benches on the other side of the shrubs
Public Meeting #1	5/24/16	So sharp corners
Public Meeting #1	5/24/16	More comfortable seating
Public Meeting #1	5/24/16	More individualized seating--a bench looks occupied if only 1 person is there
Public Meeting #1	5/24/16	More wheelchair and walker access
Public Meeting #1	5/24/16	No illegal acitivity
Public Meeting #1	5/24/16	No glass -- dogs and kids get cut on broken bottles
Public Meeting #1	5/24/16	No concrete
Public Meeting #1	5/24/16	More seating near fence
Public Meeting #1	5/24/16	Furniture installation is good
Public Meeting #1	5/24/16	Covered BBQ area for people to sit down in bad weather
Public Meeting #1	5/24/16	Play equipment for kids would be nice (Coming from a mother of a 2 yr old that is not comfortable bringing her daughter to the park and goes to Cal Anderson instead)
Public Meeting #1	5/24/16	Design for people over dogs
Public Meeting #1	5/24/16	No covered area--feels overbuilt
Public Meeting #1	5/24/16	Add lights--more street lights and string lights
Public Meeting #1	5/24/16	Better forms of light--more muted or directed in a specific area so it doesn't disturb neighbors but lights the park
Public Meeting #1	5/24/16	Create a smoking area
Public Meeting #1	5/24/16	Leave it like it is!
Public Meeting #1	5/24/16	Playground for kids--mothers who don't come currently due to grass smelling like pee and people sleeping in the park
Public Meeting #1	5/24/16	No hammocks or long benches
Public Meeting #1	5/24/16	(We want) Singing; food trucks
Public Meeting #1	5/24/16	BBQs!

Public Meeting #1	5/24/16	Fountain would be a great addition
Public Meeting #1	5/24/16	Open up boxwood hedges
Public Meeting #1	5/24/16	"Its suppose to be a park for kids"
Public Meeting #1	5/24/16	Good example of a P Patch--Marlborough House
Public Meeting #1	5/24/16	Save hedging--good division of space; upgrade fence; keep garden
Public Meeting #1	5/24/16	No to food trucks
Public Meeting #1	5/24/16	Take over parking strip
Public Meeting #1	5/24/16	How to deal with cigarette trash and second hand smoke?
Public Meeting #1	5/24/16	Keep the grass--not too hard
Public Meeting #1	5/24/16	Keep grass, hedge, benches
Public Meeting #1	5/24/16	I like the brick
Public Meeting #1	5/24/16	Leave as much green as possible!
Public Meeting #1	5/24/16	Let's get the dog poo off the grass! Use signs to direct people with dogs off grass..Provide them with bags to dispose of poo.
Public Meeting #1	5/24/16	Adult exercise equipment--such as pull up bars
Public Meeting #1	5/24/16	Watch out for the rats in the hedges
Public Meeting #1	5/24/16	Pet shop
Public Meeting #1	5/24/16	Save the First Hill Park the way it is and use the funds to improve the University Triangle Park--it would be a great use of resources.
Public Meeting #1	5/24/16	Nothing; no bands; no noise
Public Meeting #1	5/24/16	I would like some musical events; maybe on weekends; but not too late
Public Meeting #1	5/24/16	I want only acoustic sets in the park
Public Meeting #1	5/24/16	My living room/bedroom windows sit right on the park. I do not want to be subjected to all that noise. I will not be able to enjoy my apartment quietly if you have live music three days a week. Summe in the Park are at business areas--not someone's backyards. First Hill Parkshould not have live music and more people--it would be distructive to the entire peace and quiet of the neighborhood. Don't force us into having t listen to it or dealing with more people--more noise.
Public Meeting #1	5/24/16	Avoid any kind of overhead structure that encourages the transient and drug inclined population to continually occupy the space
Public Meeting #1	5/24/16	Check for soil contaniments and fertilizers and pesticides--they will affect ourselves and our dogs.
Public Meeting #1	5/24/16	Devote 1/4 of the park to a dog run. These elements only bring more people to the park.
Public Meeting #1	5/24/16	No umbrellas or other sheltering objects to avoid druggies from hiding out.
Public Meeting #1	5/24/16	Limb up trees
Public Meeting #1	5/24/16	Less landscaping; more usable space
Public Meeting #1	5/24/16	Better drainage so its not muddy year round
Public Meeting #1	5/24/16	Covered areas with seating and grilling!
Public Meeting #1	5/24/16	Games--bocce, horse shoes, shuffle board
Public Meeting #1	5/24/16	Color! Natural or painted.
Public Meeting #1	5/24/16	Needs to be child friendly!
Public Meeting #1	5/24/16	A fence so parents don't have to worry about their kids running into the street
Public Meeting #1	5/24/16	Fountain (with dog fountain low down)
Public Meeting #1	5/24/16	Pull up bar for exercise
Public Meeting #1	5/24/16	Childrens play equipment area

Public Meeting #1	5/24/16	I love the park as it is, the maturity of the plants and trees. We need to get rid of the "riff raff." We need a park ambassador. Please keep the park for people, there is a dog park 3 blocks away.
Public Meeting #1	5/24/16	No smoking zone, please! Or containers for butts
Public Meeting #1	5/24/16	Solar lighting!
Public Meeting #1	5/24/16	Keep integrity of heritage plants--hastas, bleeding hearts, fuschia
Public Meeting #1	5/24/16	Kids meery go round
Public Meeting #1	5/24/16	There is no Drainage--we must stabilize dirt mud hole!
Public Meeting #1	5/24/16	Pay attention to trees and trimming in the landscape. Watch out for the rat "condominiums"!
Public Meeting #1	5/24/16	Public artwork would be great!
Public Meeting #1	5/24/16	More built-in seating
Public Meeting #1	5/24/16	Covered seating area with grills so we can cook out and use park more than 3 months/year
Public Meeting #1	5/24/16	Get rid of fences use by skateboarders/bumps
Public Meeting #1	5/24/16	No music more than 1x week
Public Meeting #1	5/24/16	Kids' play structure/jungle gym
Public Meeting #1	5/24/16	Middle area with bushes and benches are currently used for drug dealing and other undesirable activite:
Public Meeting #1	5/24/16	Bushes / plant areas used for garbage can, needles, cigarette butts and bathroom
Public Meeting #1	5/24/16	Lights with sensors--automatic shutoff at 11 pm
Public Meeting #1	5/24/16	Get rid of low ground cover which is ideal for rat breeding--takes up space for potential seating/covered grill/seat areas
Public Meeting #1	5/24/16	"Expand" park boundary to street side of sidewalk
Public Meeting #1	5/24/16	Preference for learning about plants with p-patch (raised beds) vs. metal/plastic play structures
Public Meeting #1	5/24/16	Spend less for "things" more to "support" / park ambassador
Public Meeting #1	5/24/16	More benches for locals
Public Meeting #1	5/24/16	Grass!
Public Meeting #1	5/24/16	The Yellowwood trees within the park are the only of their kind in Seattle – keep them
Public Meeting #1	5/24/16	Interested in turning the sidewalk along University into a “thing” with benches facing out in a long line, European park style, allowing the park to face out to the street and blurring the line between the sidewalk and the park
Public Meeting #1	5/24/16	Increase the planting in the ROW planting areas
Public Meeting #1	5/24/16	Kids, dogs, and color are good for older people, especially those experiencing cognitive decline
Public Meeting #1	5/24/16	Find ways to get kids and older folks to interact
Public Meeting #1	5/24/16	Better lighting
Public Meeting #1	5/24/16	Move noise making activities away from Cascade Court
Public Meeting #1	5/24/16	Covered areas would be great for activities like BBQing
Public Meeting #1	5/24/16	Cut benches into the existing concrete wall along the planter/walkway
Public Meeting #1	5/24/16	Regrade the park for better drainage -- gets really wet currently
Public Meeting #1	5/24/16	Running water like a dog drinking fountain might be problematic
Public Meeting #1	5/24/16	Kids wants a big slide, a treehouse, and a trampoline
Public Meeting #1	5/24/16	"Its suppose to be a park for kids"
Public Meeting #1	5/24/16	The park is my backyard, I don't want it to change
Public Meeting #1	5/24/16	Please maintain the park--cut the grass, weed flower beds
Public Meeting #1	5/24/16	Reduce the need for maintenance
Public Meeting #1	5/24/16	Dwarf pine trees with 3 benches in a triangle around tree on top of concrete with tile base
Public Meeting #1	5/24/16	No anti-homelessness benches!

Public Meeting #1	5/24/16	Small Covered Space
Public Meeting #1	5/24/16	Keep tree canopy
Public Meeting #1	5/24/16	Don't like funky chairs
Public Meeting #1	5/24/16	Let's keep functional items
Public Meeting #1	5/24/16	Don't encourage homelessness campout
Public Meeting #1	5/24/16	Keep trees; get rid of groundcover--its used for rats, needles, cigarette butts, bathroom
Public Meeting #1	5/24/16	Keep mature trees, lots of green, hostas, benches
Public Meeting #1	5/24/16	Don't touch the trees!
Public Meeting #1	5/24/16	Keep the benches
Public Meeting #1	5/24/16	Massage station
Public Meeting #1	5/24/16	Circle benches
Public Meeting #1	5/24/16	Picnick benches
Public Meeting #1	5/24/16	Like the hosta flowers--spruce it up!
Public Meeting #1	5/24/16	Fewer bushes for the peeps to hide behind
Public Meeting #1	5/24/16	Better maintenance
Public Meeting #1	5/24/16	Pretty lights! String and street
Public Meeting #1	5/24/16	Strung lights in trees and shrubs
Public Meeting #1	5/24/16	Wifi!
Public Meeting #1	5/24/16	Fountain
Public Meeting #1	5/24/16	Funky chair!
Public Meeting #1	5/24/16	"Relax" is the word!
Public Meeting #1	5/24/16	Smoking Area--need cig. Butt holder
Public Meeting #1	5/24/16	Quiet activities are best
Public Meeting #1	5/24/16	Hammocks!
Public Meeting #1	5/24/16	Multiple modern chairs + benches
Public Meeting #1	5/24/16	Terraced seating in rear seat wall
Public Meeting #1	5/24/16	Better connect house and park
Public Meeting #1	5/24/16	Can the park views face south for better sun exposure? Right now it all faces north towards the cross streets
Public Meeting #1	5/24/16	Rain shelter wax canvas
Public Meeting #1	5/24/16	A small dog run would encourage more use of the park 24/7 to bring more " eyes on the street" and avoid deviant behavior.
Public Meeting #1	5/24/16	2 tables + 1 grill = happy tummy
Public Meeting #1	5/24/16	Small P-patch (like Thomas St. Garden--mini version)
Public Meeting #1	5/24/16	P-patch!
Public Meeting #1	5/24/16	BBQ!
Public Meeting #1	5/24/16	Coffee Kiosk!
Public Meeting #1	5/24/16	Drainage in Lawn Area!
Public Meeting #1	5/24/16	Let's make a specific zone for food trucks and performance groups.
Public Meeting #1	5/24/16	Farmers Market
Public Meeting #1	5/24/16	Farmers Market
Public Meeting #1	5/24/16	Food trucks!
Public Meeting #1	5/24/16	The more tables there are the more transiencies appear and discourage neighbors
Public Meeting #1	5/24/16	Parks Dept needs more rate resistant garbage cans that are emptied frequently

Public Meeting #1	5/24/16	Open up street--lower or remove plantings along University and provide seating facing street
Public Meeting #1	5/24/16	Ice cream
Public Meeting #1	5/24/16	Keep some open space on brick and concrete surfaces
Public Meeting #1	5/24/16	Festivals--street + farmers market
Public Meeting #1	5/24/16	Have space for laps for seniors in the neighborhood
Public Meeting #1	5/24/16	More benches
Public Meeting #1	5/24/16	Puppet Show
Public Meeting #1	5/24/16	Northwest corner--dig it up, put down concrete and tile platform with benches, grills + roof. Open sides so people can use the park the whole year--like Lincoln Park
Public Meeting #1	5/24/16	Drum circle, tree jam
Public Meeting #1	5/24/16	Monthly Movies
Public Meeting #1	5/24/16	Yoga in the park
Public Meeting #1	5/24/16	Croquet
Public Meeting #1	5/24/16	Dance floor/platform
Public Meeting #1	5/24/16	Keep it shady with "sun spot"
Public Meeting #1	5/24/16	Widen the park and narrow the street--like on Bell St.
Public Meeting #1	5/24/16	Grassy bocce court
Public Meeting #1	5/24/16	No amplified music
Public Meeting #1	5/24/16	Widen park as feasible
Public Meeting #1	5/24/16	Bank of benches on every corner
Public Meeting #1	5/24/16	No playground, no noise from kids--I live here (Cascade Court)
Public Meeting #1	5/24/16	Self-powered workout equipment around kids play structure
Public Meeting #1	5/24/16	Smoking depository container--no smoking sign
Public Meeting #1	5/24/16	Kinetic play + rocking horses + twirling for older kids/teens
Public Meeting #1	5/24/16	Swings!
Public Meeting #1	5/24/16	Bocce court next to alley between hedges
Public Meeting #1	5/24/16	Chairs with arms
Public Meeting #1	5/24/16	Lawn bocce (NOT concret)
Public Meeting #1	5/24/16	Work out options: pull up bar, stationary bike, climbing, bouldering, leg pushups, jump rope
Public Meeting #1	5/24/16	Water slide
Public Meeting #1	5/24/16	Huge Slides
Public Meeting #1	5/24/16	Design should discourage transients
Public Meeting #1	5/24/16	Ice cream
Public Meeting #1	5/24/16	Dance
Public Meeting #1	5/24/16	Concrete blah--add color!
Public Meeting #1	5/24/16	Big open green for frisbee/soccer/picnicks
Public Meeting #1	5/24/16	Keep the hedges!
Public Meeting #1	5/24/16	A small part of the park can be a dog run to encourage more people to use the park
Public Meeting #1	5/24/16	Space for a grassy game, i.e. croquet
Public Meeting #1	5/24/16	Table for games-kids and adults!
Public Meeting #1	5/24/16	Match historic house
Public Meeting #1	5/24/16	Wifi!
Public Meeting #1	5/24/16	Evening lights and tables

Public Meeting #1	5/24/16	Cat park
Public Meeting #1	5/24/16	Too dark. Plants are isolating
Public Meeting #1	5/24/16	BBQ stands
Public Meeting #1	5/24/16	If lights, no cables
Public Meeting #1	5/24/16	Benches to read/eat with sleeping /no rails
Public Meeting #1	5/24/16	Keep historic context--benches
Public Meeting #1	5/24/16	Get rid of "fountain area"
Public Meeting #1	5/24/16	Some sort of low lighting at night
Public Meeting #1	5/24/16	More lighting
Public Meeting #1	5/24/16	Storytelling
Public Meeting #1	5/24/16	Jungle gym
Public Meeting #1	5/24/16	More activity! Kids area. More lighting.
Public Meeting #1	5/24/16	This park is outdated
Public Meeting #1	5/24/16	Don't change a thing
Public Meeting #1	5/24/16	Colored lights + sculptures
Public Meeting #1	5/24/16	Wifi!
Public Meeting #1	5/24/16	Keep bike plan in mind
Public Meeting #1	5/24/16	No wifi--keep it an escape/more tranquil
Public Meeting #1	5/24/16	Zero landfill park (all waste on-site is diverted)
Public Meeting #1	5/24/16	Safe place to smoke (yes, it is illegal to smoke here, but people are going to do it anyway)
Public Meeting #1	5/24/16	What are we doing with on-site stormwater? Opportunity to engage community with water elements
Public Meeting #1	5/24/16	Keep the trees!
Public Meeting #1	5/24/16	Quiet + nice--don't want to change anything
Public Meeting #1	5/24/16	Remove hedges
Public Meeting #1	5/24/16	Urine smell is an issue!
Public Meeting #1	5/24/16	Discourage overnight sleeping here
Public Meeting #1	5/24/16	Lights with sensors--automatic shutoff at 11 pm
Public Meeting #1	5/24/16	Don't remove yellow-wood tree
Public Meeting #1	5/24/16	Lighting/solar installation that adjusts to tree canopy
Public Meeting #1	5/24/16	Dogs! Water for dogs at fountain
Public Meeting #1	5/24/16	Better fence between park + mansion
Public Meeting #1	5/24/16	Engage to Stimson--green//historic perspective
Public Meeting #1	5/24/16	Bright yellow bench okay but some other place
Public Meeting #1	5/24/16	Better lighting at edge
Public Meeting #1	5/24/16	Nontoxic material for street furniture (no PVC or vinyl)
Public Meeting #1	5/24/16	Real happy with the way it is--with dogs
Public Meeting #1	5/24/16	Open green for sports, movies, bands, etc
Public Meeting #1	5/24/16	Get rid of hedges--like as divider, but without fence....?
Public Meeting #1	5/24/16	Rain = MUD
Public Meeting #1	5/24/16	Maybe put bike racks in planter strip between sidewalks and street
Public Meeting #1	5/24/16	No smoking
Public Meeting #1	5/24/16	No kite flying
Public Meeting #1	5/24/16	No glass allowed

Public Meeting #1	5/24/16	Row of benches facing out/ double row with no sleep arm rests at the edge of park
Public Meeting #1	5/24/16	Community barbeques / social gatherings
Public Meeting #1	5/24/16	Ugly fence on south side...how about wrought iron?
Public Meeting #1	5/24/16	Artistic benches--lovely but cant get out of if elderly
Public Meeting #1	5/24/16	Park ambassador!
Public Meeting #1	5/24/16	Sit in shade on hot days!
Public Meeting #1	5/24/16	Evening movies
Public Meeting #1	5/24/16	Community garden / p-patches
Public Meeting #1	5/24/16	Bocce, croquet
Public Meeting #1	5/24/16	Food trucks
Public Meeting #1	5/24/16	Peformance stage!
Public Meeting #1	5/24/16	Such a small park--be careful of the proportion of landscaping to usable space
Public Meeting #1	5/24/16	NW perennials as focus or volunteer gardeners--not enough space for p-patches
Public Meeting #1	5/24/16	Plant the parking strip with interesting plants and no hedge
Public Meeting #1	5/24/16	Working out--jump rope, pushups, exercise
Public Meeting #1	5/24/16	More trashcans--recycle option
Public Meeting #1	5/24/16	Avoid alcohol/broken glass--dog gets cut feet
Public Meeting #1	5/24/16	Illuminate retaining wall on south side which may reduce loitering and drug use
Public Meeting #1	5/24/16	Grass gets soggy--better drainage
Public Meeting #1	5/24/16	Avoid too loud of music
Public Meeting #1	5/24/16	Chain link fence is very unwelcoming
Public Meeting #1	5/24/16	More trash cans / cleaning
Public Meeting #1	5/24/16	Exercise parquor equipment, swings, stretch
Public Meeting #1	5/24/16	Gameboards, shuffleboards in ground/ play activities
Public Meeting #1	5/24/16	Open park and remove bushes
Public Meeting #1	5/24/16	Removing umbrellas at Bolyston helped reduce homelessness and druggies
Public Meeting #1	5/24/16	Remove tables--magnet for junkies and druggies
Public Meeting #1	5/24/16	Not have people camping in the park
Public Meeting #1	5/24/16	Hypodermic needles in the park
Public Meeting #1	5/24/16	Less needles, less homelessness, how do we do that?
Public Meeting #1	5/24/16	Dogs doing their business
Public Meeting #1	5/24/16	Rats
Public Meeting #1	5/24/16	No skateboards
Public Meeting #1	5/24/16	Coffee cart
Public Meeting #1	5/24/16	Get rid of some shrubs
Public Meeting #1	5/24/16	City's maintenance too sporadic, not really good at mantaining gardens--refocus resources
Public Meeting #1	5/24/16	Transparency from City on what they can maintain
Public Meeting #1	5/24/16	Grass is deteriorating from use in high water areas--better locations?
Public Meeting #1	5/24/16	There will be more kids in the neighborhood--think of ways for kids to mix with multiple generations
Public Meeting #1	5/24/16	Not all plaza
Public Meeting #1	5/24/16	Take out gardens, put back "no dogs" lawns for sitting on
Public Meeting #1	5/24/16	Stimson Green please take down dead Cedar on southside of bldg
Public Meeting #1	5/24/16	Clean up grounds--better maintenance

Public Meeting #1	5/24/16	Want people to be able to watch one another and the activities within the park
Public Meeting #1	5/24/16	More natural light would be awesome
Public Meeting #1	5/24/16	Ledges along southside make good seating but planting is overgrown
Public Meeting #1	5/24/16	Improve sight lines -- hedges are hiding place
Public Meeting #1	5/24/16	A few activities-- summertime concerts
Public Meeting #1	5/24/16	Ok to get rid of garden? Not too crowded
Public Meeting #1	5/24/16	Pathways are confusing--better layout
Public Meeting #1	5/24/16	Number of walkers increasing significantly! Uber effect
Public Meeting #1	5/24/16	Bike racks but not too many--proportional with room to access
Public Meeting #1	5/24/16	Improve safety--lighting
Public Meeting #1	5/24/16	There's too much landscape, needs to be more seating!
Public Meeting #1	5/24/16	Huge problem with public peeing and pooping
Public Meeting #1	5/24/16	Shrubby edge = barrier.
Email	5/24/16	More seating some of which at least should be traditional benches with backs
Public Meeting #1	5/24/16	I like the shade--bakes the west side of buildings--this is an oasis
Public Meeting #1	5/24/16	Keep kids safe
Public Meeting #1	5/24/16	Way too many needles in bushes
Public Meeting #1	5/24/16	How are we handling waste on site? Recycling and compost
Public Meeting #1	5/24/16	Communal food pantry/fridge
Public Meeting #1	5/24/16	Less paving, more green, use biophilic elements
Public Meeting #1	5/24/16	All lighting needs to be solar powered
Public Meeting #1	5/24/16	Keep the grass!
Email	5/24/16	
		People like to sit and lean on the retaining wall along the southside. Is there a place to repeat this multifunctional element?
Public Meeting #1	5/24/16	More Green--no bright colors like the bright blue parket
Public Meeting #1	5/24/16	More seating
Public Meeting #1	5/24/16	Several small gathering areas -- group tables and benches
Email	5/24/16	What about a curving path throug the park with benches along it?
Email	5/24/16	Could the perimeter hedges become a path with benches?
Email	5/24/16	Is there a way to engage the small elevation change between Minor to the east side alley?
Email	5/24/16	Less shade may be helpful to minimize "shady" activities. If the patio were opened up, why couldn't it work as a stage for performances, viewed from the rest of the park
Therapeutic Health Services	5/26/2016	Eliminate hiding spots in planting
Therapeutic Health Services	5/25/2016	Make play appropriate for all ages
Therapeutic Health Services	5/25/2016	"Good, classic" play equipment: merry go round and teeter totter
Therapeutic Health Services	5/25/2016	Garden--edible or community garden
Therapeutic Health Services	5/25/2016	Diaper appropriate changing area
Therapeutic Health Services	5/25/2016	Keep the park clean--provide poo bags for dog owners and help minimize drug use
Therapeutic Health Services	5/25/2016	Have a kick off BBQ community event
Therapeutic Health Services	5/25/2016	Programmed events throughout the year
Therapeutic Health Services	5/25/2016	Kid friendly welcoming party
Therapeutic Health Services	5/25/2016	BBQs would be great addition to the neighborhood
Therapeutic Health Services	5/25/2016	Separate areas for toddlers and big kids with soft ground

Therapeutic Health Services	5/25/2016	Separate kid and dog area
Therapeutic Health Services	5/25/2016	Create a conversation between different age groups and demographics
Therapeutic Health Services	5/25/2016	Adult workout area
Therapeutic Health Services	5/25/2016	Better lighting!
Therapeutic Health Services	5/25/2016	Programming throughout the year--like easter egg hunt!
Therapeutic Health Services	5/25/2016	Small acoustic concerts!
Therapeutic Health Services	5/25/2016	Movies in the park!
Therapeutic Health Services	5/25/2016	Inflatable toys--bouncy house.
Therapeutic Health Services	5/25/2016	Bring more art to the park like sculptures
Therapeutic Health Services	5/25/2016	Child friendly art
Therapeutic Health Services	5/25/2016	Water play feature
Therapeutic Health Services	5/25/2016	Block party
Therapeutic Health Services	5/25/2016	Vendor with hamburger and hot dogs
Therapeutic Health Services	5/25/2016	Kids and families set a tone for a safe park!
Therapeutic Health Services	5/25/2016	Lunches for kids
Therapeutic Health Services	5/25/2016	Mommy exercise equipment
Therapeutic Health Services	5/25/2016	Picnic tables
Therapeutic Health Services	5/25/2016	Sand box
Therapeutic Health Services	5/25/2016	Law enforcement participation
Therapeutic Health Services	5/25/2016	Emergency Callbox
Therapeutic Health Services	5/25/2016	Ladder and slide in playground
Therapeutic Health Services	5/25/2016	"spinning seat" in playground
Public Meeting #2	6/21/2016	It's quite windy in this park and the Concept B open area
Public Meeting #2	6/21/2016	More lights will be great and especially in the springtime
Public Meeting #2	6/21/2016	There are 6-7 feet between U. St. sidewalk and interior of park at lawn--horrible waste of space
Public Meeting #2	6/21/2016	We still need a protective planting strip between street and interior of park
Public Meeting #2	6/21/2016	Performance art/children are great but NOT music
Public Meeting #2	6/21/2016	No movable furniture or chained up furniture
Public Meeting #2	6/21/2016	More garbage cans
Public Meeting #2	6/21/2016	Love the diagonal walk through in Concept B
Public Meeting #2	6/21/2016	An area of covered seating is needed for elders (rain or shine)
Public Meeting #2	6/21/2016	Dividers on all seating areas to deter skateboarders
Public Meeting #2	6/21/2016	Will the garden path/walk be wide enough to turn around in a wheelchair?
Public Meeting #2	6/21/2016	How about a dog run in the back to attract both kids (who like watching) and people?We're concerned about drainage on soft surfaces regardless of options. It's not great now.
Public Meeting #2	6/21/2016	University/Minor corner creates hiding places--open it up
Public Meeting #2	6/21/2016	Seat walls invites skateboarders
Public Meeting #2	6/21/2016	Outside covered areas enable us to enjoy the park in all weather
Public Meeting #2	6/21/2016	No play area alley side
Public Meeting #2	6/21/2016	I like the concept of some boulders and other "sitable" things in garden path area.
Public Meeting #2	6/21/2016	I like the winding garden path
Public Meeting #2	6/21/2016	I love the garden path
Public Meeting #2	6/21/2016	Lawn and trees--home sweet home.

Public Meeting #2	6/21/2016	add bocce near the bbq area
Public Meeting #2	6/21/2016	benches for us old folks to observe the young'uns
Public Meeting #2	6/21/2016	I like bbqs
Public Meeting #2	6/21/2016	I like bbqs
Public Meeting #2	6/21/2016	I like bbqs
Public Meeting #2	6/21/2016	I'm not a huge fan of the commons style in Concept B
Public Meeting #2	6/21/2016	I prefer the stairway seating to a wall and bench seating. Too much garbage and clutter would end up under the large bench.
Public Meeting #2	6/21/2016	Could there be potential of integrating amphitheater seating into seatwall going up to Stimson with plantings interjected throughout.
Public Meeting #2	6/21/2016	Let's maximize planting strip area to move park out in the ROW while maintaining low, low planting for a green separation.
Public Meeting #2	6/21/2016	Keeping the corner University and Minor corner more open is a plus. Currently transients use the bushes as a shelter and most times we cant use the area.
Public Meeting #2	6/21/2016	Combine adventure walk with sculpture garden and playful climbing elements.
Public Meeting #2	6/21/2016	Doesn't this recreate the problems we currently have with the hedges? Visibility, lack of seating, etc.
Public Meeting #2	6/21/2016	I am anti- bbq
Public Meeting #2	6/21/2016	I am anti- bbq
Public Meeting #2	6/21/2016	No groundcover that provides habitat for rats
Public Meeting #2	6/21/2016	The adventure trail in concept B is not appropriate for this urban park scale and doesn't respond to historical context
Public Meeting #2	6/21/2016	The existing hedges provide a safe interior space and add a lot of aesthetic value
Public Meeting #2	6/21/2016	Concept C's sculpture area is a waste of space
Public Meeting #2	6/21/2016	Chess tables would be a great addition
Public Meeting #2	6/21/2016	Despise the idea of having to remove the corner tree in Concept B
Public Meeting #2	6/21/2016	Doesn't like Concept B's perch facing away from the park
Public Meeting #2	6/21/2016	The cables for locking the café seating is uninviting--likes fixed tables more
Public Meeting #2	6/21/2016	More garbage cans--more than the current 2 existing
Public Meeting #2	6/21/2016	Volunteer Park has some great examples of playful nature structures for kids
Public Meeting #2	6/21/2016	Concerned about the potential smoke caused by bbqs and the second hand smoke the neighbors would have to deal with
Public Meeting #2	6/21/2016	Loves the idea of a sunny open grass area
Public Meeting #2	6/21/2016	Great perimeter seating in both the right of way and diagonal corridor
Public Meeting #2	6/21/2016	Removing hedges, wahoo!
Public Meeting #2	6/21/2016	Continuous planting in rear will only incentivize people to stay and litter
Public Meeting #2	6/21/2016	Great to have planted buffer between park and street
Public Meeting #2	6/21/2016	Likes seating with greenery behind
Public Meeting #2	6/21/2016	Loves boulders and adventure/garden path!
Public Meeting #2	6/21/2016	Seatwalls are solely used for skateboarders
Public Meeting #2	6/21/2016	Allegedly huge skateboarding issues
Public Meeting #2	6/21/2016	Prefers middle corridor with perimeter seating
Public Meeting #2	6/21/2016	Nice having separate areas for bbq to accommodate multiple parties
Public Meeting #2	6/21/2016	Still likes boxwood as transition between park and street
Public Meeting #2	6/21/2016	Tree pruning will greatly help to bring more light into park

Public Meeting #2	6/21/2016	No movable furniture--look at UUB its overflowing with trash, cig. Butts which makes it looks worse
Public Meeting #2	6/21/2016	Park is great how it is
Public Meeting #2	6/21/2016	Are movable furnishings wheelchair friendly? Wires and cables?
Public Meeting #2	6/21/2016	Not very many children in neighborhood
Public Meeting #2	6/21/2016	Like the re-use
Public Meeting #2	6/21/2016	ART! No nnq. Not square. Likes seat steps
Public Meeting #2	6/21/2016	Like the brick. Hate the brick. Like the french gravel/DG
Public Meeting #2	6/21/2016	Pervious concrete?
Public Meeting #2	6/21/2016	Move the hedges to the edges--makes more room for grassy games and benches
Public Meeting #2	6/21/2016	Open the front
Public Meeting #2	6/21/2016	No skateboarding--use deterrents
Public Meeting #2	6/21/2016	Please keep the bbq design!
Public Meeting #2	6/21/2016	Keep the spot for cooking and eating and socializing
Public Meeting #2	6/21/2016	Southside by mansion replace ground cover with cut in seating with planters in between
Public Meeting #2	6/21/2016	Security cameras on web
Public Meeting #2	6/21/2016	More pedestrian lighting
Public Meeting #2	6/21/2016	Dog friendly is important
Public Meeting #2	6/21/2016	Save the bricks on south-east corner
Public Meeting #2	6/21/2016	Include stuff to climb on
Public Meeting #2	6/21/2016	Like greenery!
Public Meeting #2	6/21/2016	Sunlight!
Public Meeting #2	6/21/2016	Shaded seating for elders
Public Meeting #2	6/21/2016	Shaded seating that helps elders
Public Meeting #2	6/21/2016	Historical sign--FH, history, graffiti proof highlighting historical building
Public Meeting #2	6/21/2016	Like quiet planted area at corner
Public Meeting #2	6/21/2016	Statement about soil/lawn drainage
Public Meeting #2	6/21/2016	Let's NOT have music everyday
Public Meeting #2	6/21/2016	Cables are hard for wheelchairs--cables from the movable furniture
Public Meeting #2	6/21/2016	Dirty--needs trash pick up
Public Meeting #2	6/21/2016	Dog waste--separate bin
Public Meeting #2	6/21/2016	Children climbing equipment
Public Meeting #2	6/21/2016	Water feature preferred
Public Meeting #2	6/21/2016	Prefers visually unobstructive planting
Public Meeting #2	6/21/2016	Grills-good
Public Meeting #2	6/21/2016	Likes seating areas in walls with planting spaces on Stimson-Green boundary
Public Meeting #2	6/21/2016	Let's have sunbathing--loose the tree on the corner
Public Meeting #2	6/21/2016	Can we limb the trees to create more sun?
Public Meeting #2	6/21/2016	Plan C works best for me
Public Meeting #2	6/21/2016	No seating. Can't see into bushes.
Public Meeting #2	6/21/2016	I like the existing brick walkway and seat wall
Public Meeting #2	6/21/2016	Ridiculous waste of space. People read here. (in reference to the sculpture walk)
Public Meeting #2	6/21/2016	bocce! By bbq area
Public Meeting #2	6/21/2016	Reading. Get away from bushes. There are so few seats for reading.

Public Meeting #2	6/21/2016	Active play stuff for kids
Public Meeting #2	6/21/2016	Central stage better than corner for noise
Public Meeting #2	6/21/2016	Places for throwing a football, playing frisbee and kicking a soccer ball. Playing bocce
Public Meeting #2	6/21/2016	Like hedges forming the separation from the street
Public Meeting #2	6/21/2016	More sittable edges
Public Meeting #2	6/21/2016	Low hedges, if you fear bad men crouched behind hedges
Public Meeting #2	6/21/2016	No hedges = not attractive to sit and read--feels like sitting on sidewalk
Public Meeting #2	6/21/2016	Maybe food truck parking for events
Public Meeting #2	6/21/2016	Likes hardscape path to cut thru park
Public Meeting #2	6/21/2016	Enlarging commons lawn a little would be nice
Public Meeting #2	6/21/2016	"Seat wall" is a nice idea--thank you.
Public Meeting #2	6/21/2016	Sculpture garden and flowers and pathway and variety of seating
Public Meeting #2	6/21/2016	I like the stairs + bbq. Don't know if the seating in the garden would go well in this park. More open seating is better.
Public Meeting #2	6/21/2016	No bbqs-- rats, mice and garbage
Public Meeting #2	6/21/2016	Sleeping on benches?/steps?
Public Meeting #2	6/21/2016	Handicap accessible especially walking is difficult on grass
Public Meeting #2	6/21/2016	This concept is the best plan!
Public Meeting #2	6/21/2016	Have a place that's away from grass that people use for dogs to do their business--not a dog run--just a place for people to bring their dogs
Public Meeting #2	6/21/2016	Chairs and tables chained together is not friendly to people with a walker
Public Meeting #2	6/21/2016	I like concept C more than B
Public Meeting #2	6/21/2016	Sculpture garden/public art= no desirable, tends to age poorly, often not reflective of neighborhood, veggie garden or something practical is better
Public Meeting #2	6/21/2016	Covered seating area to attract elders. They may be sensitive to light and rain
Public Meeting #2	6/21/2016	No hedges that partially hide junkies
Public Meeting #2	6/21/2016	I like the winding path but veggie garden rather than art
Public Meeting #2	6/21/2016	Love the diagonal walk through in Concept B
Public Meeting #2	6/21/2016	Small covered area--hazebo in the higher elevated area
Public Meeting #2	6/21/2016	I like the sculpture park more than B's garden
Public Meeting #2	6/21/2016	Add a bbq
Public Meeting #2	6/21/2016	Like hedges as they are-- make sure music is not too loud
Public Meeting #2	6/21/2016	Minimize intrusive elements--open with tree canopy!
Public Meeting #2	6/21/2016	Bicycle parking--YAY!
Public Meeting #2	6/21/2016	Keep walkway but interrupt so skate boarding is not attractive
Public Meeting #2	6/21/2016	Is this area (the sculpture garden) just like the hedges/bushes in front already?
Public Meeting #2	6/21/2016	Shall we make the diagonal cut on the corner of Concept C just a lawn?
Public Meeting #2	6/21/2016	Let's not make the sculpture garden all kid dedicated
Public Meeting #2	6/21/2016	They should be all playable sculptures
Public Meeting #2	6/21/2016	Big green blankness--what will people do?!
Public Meeting #2	6/21/2016	Wonderful diagonal walk. Really opens up the park!
Public Meeting #2	6/21/2016	Great having the seat walls looking to the northwest!
Public Meeting #2	6/21/2016	Identify trees in the park and the mile for public education
Public Meeting #2	6/21/2016	Close the back southeast corner with planting.

Public Meeting #2	6/21/2016	Too straight, square. People tend to prefer winding paths. --See Rachel and Stephen Kaplan
Public Meeting #2	6/21/2016	Sculpture--not needed, feels less representative of neighborhood, expensive, ages quickly
Public Meeting #2	6/21/2016	This concept is good because its simple.
Public Meeting #2	6/21/2016	Covered seating for elders is needed to attract them. Sun and rain cover
Public Meeting #2	6/21/2016	Stage and play area near alley good for noise containment.
Public Meeting #2	6/21/2016	Hedges and ground cover provide condos for rats
Public Meeting #2	6/21/2016	Too rectilinear--prefer B and C
Public Meeting #2	6/21/2016	Keep terrace spot for entertainment, cooking, eating, chatting and meeting
Public Meeting #2	6/21/2016	Yes, keep some brick. Consider wood for some of the seating.
Public Meeting #2	6/21/2016	BBQ
Public Meeting #2	6/21/2016	Hedges are nasty--take up space for benches.
Public Meeting #2	6/21/2016	Love the steps/seating style of the hill.
Public Meeting #2	6/21/2016	Play area looks great!
Public Meeting #2	6/21/2016	I like the idea of the play as art
Public Meeting #2	6/21/2016	An enclosed dog run off one side of the park
Public Meeting #2	6/21/2016	Enclosed dog run would be great
Public Meeting #2	6/21/2016	I like the music
Public Meeting #2	6/21/2016	Walking labyrinth
Public Meeting #2	6/21/2016	Former flower bed!
Public Meeting #2	6/21/2016	Enhance seating options
Public Meeting #2	6/21/2016	Play should be artful
Public Meeting #2	6/21/2016	Terraced steps along SGM prop line
Public Meeting #2	6/21/2016	The park is fine how it is
Public Meeting #2	6/21/2016	All equipment should be good for kids
Public Meeting #2	6/21/2016	Like match of formal with SGM
Public Meeting #2	6/21/2016	Hedges help create that formal garden aesthetic
Public Meeting #2	6/21/2016	More lawn--usable area: first choice!
Public Meeting #2	6/21/2016	Play is a waste of space
Public Meeting #2	6/21/2016	I like the large lawn area more than kids area
Public Meeting #2	6/21/2016	no bbq!
Public Meeting #2	6/21/2016	Hedge provides a sense of security
Public Meeting #2	6/21/2016	I like the informal seating of the steps
Public Meeting #2	6/21/2016	Absolutely no umbrellas or other shleters that encourage sleepers and junkies.
Public Meeting #2	6/21/2016	Do anti-junkie, anti-sleeper design--no long benches
Public Meeting #2	6/21/2016	Too angular--prefer B/C
Public Meeting #2	6/21/2016	No large medium play area near alley for any reason
Public Meeting #2	6/21/2016	Please save the brick area and iron tables on the SE corner--wonderful!
Public Meeting #2	6/21/2016	Like the benches facing inward
Public Meeting #2	6/21/2016	The more we can do for kids the better
Public Meeting #2	6/21/2016	This is by far my favorite design. My partner agrees. We love the activity and food space, and very open, large design.
Public Meeting #2	6/21/2016	Preserve the brick!
Public Meeting #2	6/21/2016	Preserve the brick!

Public Meeting #2	6/21/2016	Like the street buffer
Public Meeting #2	6/21/2016	I like this one best.
Public Meeting #2	6/21/2016	No play area on the alleyside
Public Meeting #2	6/21/2016	Grassy area--bocce, croquet, kids, games--Grass is good!
Public Meeting #2	6/21/2016	Nobody protects a place like a mother watching her kids!
Public Meeting #3	8/2/2016	Could the community kiosk be covered?
Public Meeting #3	8/2/2016	Gravity fed toilets as seen on European streets and parks
Public Meeting #3	8/2/2016	Fremont street artwork pieces as art precedent
Public Meeting #3	8/2/2016	Yes! To hedges in the streetscape
Public Meeting #3	8/2/2016	Boulder as sitting piece on seat steps
Public Meeting #3	8/2/2016	Sit on edges of corner
Public Meeting #3	8/2/2016	Proportions of art piece critical
Public Meeting #3	8/2/2016	Lighting is important, glad to see it included
Public Meeting #3	8/2/2016	Integrated boulder at seat steps
Public Meeting #3	8/2/2016	Lawn - make sure it's not muddy
Public Meeting #3	8/2/2016	Wheelchair circulation needs to be clear and easy
Public Meeting #3	8/2/2016	Benches Benches Benches
Public Meeting #3	8/2/2016	Safety improvements for pedestrians
Public Meeting #3	8/2/2016	BBQ grills is big draw
Public Meeting #3	8/2/2016	PRAP. This is first project to be built since that document was released. Why doesn't this project propose taking over more right of way space?
Public Meeting #3	8/2/2016	Playground equipment too close to alley
Public Meeting #3	8/2/2016	Like the community kiosk
Public Meeting #3	8/2/2016	No playground
Public Meeting #3	8/2/2016	Historic sign
Public Meeting #3	8/2/2016	Benches = sleeping junkies
Public Meeting #3	8/2/2016	Have garbage cans in the middle of the park, not just at the edge.
Public Meeting #3	8/2/2016	No concerts or movies - park is too small and apartment buildings are too close.
Public Meeting #3	8/2/2016	Should have compost + recycle + landfill bins
Public Meeting #3	8/2/2016	Lots of trash cans please
Public Meeting #3	8/2/2016	There are too few bike racks in the neighborhood
Public Meeting #3	8/2/2016	Accessible children's garden on 23rd as precedent
Public Meeting #3	8/2/2016	No bright colors
Public Meeting #3	8/2/2016	obnoxious (on pictures of play equipment). This isn't cal anderson/occidental square.
Public Meeting #3	8/2/2016	I like bright colors. Fun. Life.
Public Meeting #3	8/2/2016	I love this and kids will too. (on photograph of red wavy poles).
Public Meeting #3	8/2/2016	I like this - nice to look at and fun for kids. (on photograph of red wavy poles).
Public Meeting #3	8/2/2016	art = accessible design for children + adults + cool
Public Meeting #3	8/2/2016	play friendly arts please, for social gatherings
Public Meeting #3	8/2/2016	some kind of kid friendly art please
Public Meeting #3	8/2/2016	Please leave as much grass as possible. All walkways brick please. Please be aware of sound travelling up adjoining buildings
Public Meeting #3	8/2/2016	Gravel is hard on walkers (x2)

Public Meeting #3	8/2/2016	Please consider pea gravel "Tuilleries" style.
Public Meeting #3	8/2/2016	Pea gravel!
Public Meeting #3	8/2/2016	Love brick!
Public Meeting #3	8/2/2016	Art should responde to the historic character. Not stand out too much.
Public Meeting #3	8/2/2016	Smaller scale park sign? Custom?
Public Meeting #3	8/2/2016	Bathroom?
Text to the Park	7/3/2016	
Text to the Park	7/3/2016	Use the bench designs that include a sort of partition to prevent one person from sleeping/reclining and occupying the entire bench.
Text to the Park	7/3/2016	Select benches and individual/duo seating that has arm rests. This makes it possible for the frail elderly to more easily stand up after sitting for a while.
Text to the Park	7/3/2016	The sun is hot in the summer so we elderly tend to head for the shade when we take a break from walking. Make sure that some of the benches will be shaded.
Text to the Park	7/3/2016	Trees are very important to our densely populated city and there should definitely be trees planted in this park
Text to the Park	7/3/2016	Keep it clean!
Text to the Park	6/29/2016	It will b nice2have da first hill park have birds that chirp visiting da park that is tolerable by da neighbours directly surrounding da park. Thanks
Text to the Park	6/24/2016	There was a lot to like in the three proposals. I was happy to see the interior of the park paved; more seating, including wall seating; incorporation of the parking strip at the perimeter, with seating and views across the park to Stimson-Green; and brick as a favored material (glare from light-colored concrete can be hard on the eyes). I was also happy to see changes in elevation of the site integrated into features; and the sunnier west corner given over to grass.
Text to the Park	6/24/2016	One obvious plus from opening up the center of the park with pavement: more spaces for people using walkers, some of whom seemed stranded on the sidewalk during the open house on June 21. In the same vein, comfortable seating will be top priority for some visitors, which means benches to sit on with backs to lean against, whatever other kinds of seating there are. I liked the idea of temporary performance stages set up on particular occasions.
Text to the Park	7/1/2016	The park plays well with the historical context and provides a pleasant respite for current residents. Let's keep the park in tune with the culture of the place and have it differeniated from the mega playgrounds and heavily programmed spaces with have sprinkled throughout the city already.
Email	8/8/2016	I like the flow that goes through the park from University to Minor. The current design doesn't flow....it is sort of a dead end. Big improvement. Very happy with the design overall. Good Job!!
Email	8/4/2016	I love that the new design allows you to cut through the park on a diagonal. It will create more foot traffic. I often try to do that---but the current design, with its perpendicular structure, doesn't encourage it. Another yay!
Text to the Park	7/1/2016	First Hill Park: Needs more birds.
Email	6/21/2016	
Email	5/25/2016	The problem with the park isn't that has homeless people in it, the problem is that no one else has a strong reason to be in it
Email	5/25/2016	More individualized seating- a bench looks taken if someone is sitting there so each bench is treated as one chair
Email	5/25/2016	Kids area should have edges, so kids can run around in a portion of the park.