

First Hill Public Meeting

January 2018

Agenda

- > **FHIA Board Elections**
- > **Madison BRT Update**
- > **First Hill Update**
- > **Q&A**



FIRST HILL
IMPROVEMENT ASSOCIATION

FHIA Board Elections



FIRST HILL
IMPROVEMENT ASSOCIATION

**FHIA Board Members serve
two year terms with a
maximum of four consecutive
terms for most positions.
Please vote aye or nay for the
following slate of candidates:**

2018 Board Slate

> **Betsy Braun.** Administrative Director for Facilities at Virginia Mason Medical Center

> **Frank Conlon, PhD.** First Hill resident

> **Jim Erickson.** First Hill resident

> **Mary Ellen Hudgins.** First Hill resident

> **Ted Klainer.** Project Manager for Harborview Medical Center

> **Sara McVey.** CEO of Horizon House

> **Lindsay Radliff.** First Hill resident

> **Mark Smutny.** Program Manager for Compass Housing Alliance at First Presbyterian Church

> **Gordon Werner.** First Hill resident

> **Sherry Williams.** Director of Community Engagement for Swedish Medical Center

Thank You Kendall!

**First Hill resident Kendall Baker has been
a long-standing FHIA Board member,
and is stepping off the board this year.
We thank Kendall for his service and
wish him well!**

Madison BRT Update



FIRST HILL
IMPROVEMENT ASSOCIATION

Madison Street Bus Rapid Transit (BRT)



FHIA Transportation Committee

Eric Tweit

January 9, 2017



Seattle
Department of
Transportation

Our mission, vision, and core values

Mission: deliver a high-quality transportation system for Seattle

Vision: connected people, places, and products

Committed to **5 core values** to create a city that is:

- Safe
- Interconnected
- Affordable
- Vibrant
- Innovative

For all

Presentation agenda

- Recap project need and background
- Recent milestones
- Looking ahead
- Questions

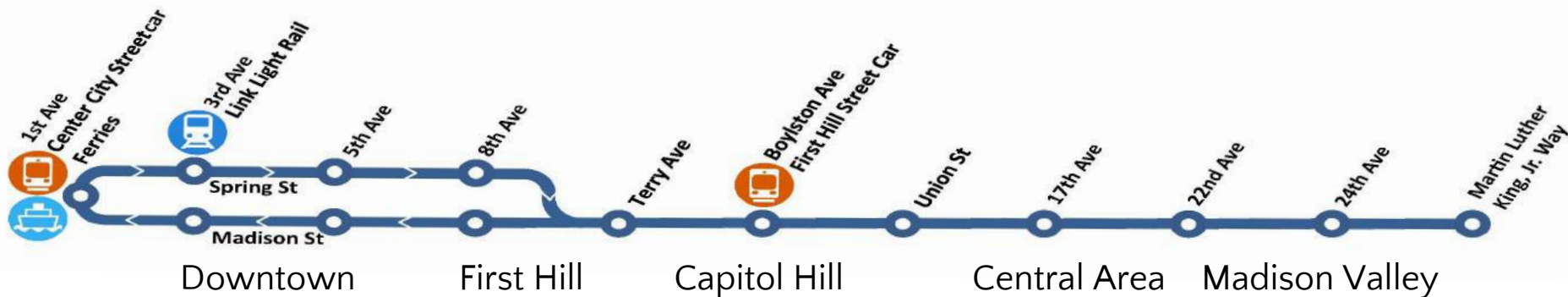
Project need

- Madison corridor bus service improvements
 - Capacity
 - Efficiency
 - Connectivity
- 2012: Madison St picked as future BRT corridor (RapidRide G line)
 - Rapid growth
 - Historically underserved areas



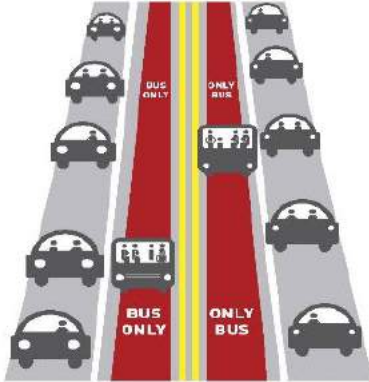
Route and connections

- Ferries & Waterfront
- Center City Connector Streetcar (shared 1st Ave stop)
- Link light rail
- RapidRide C, D, & E and other major bus routes
- First Hill Streetcar



Efficiency: 3 lane types

Transit-only lane



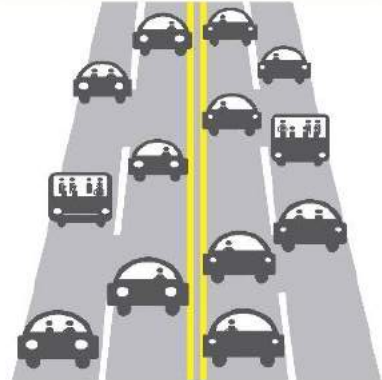
6th Ave – 15th Ave

Business access and transit lane



1st Ave – 8th Ave
15th Ave – 17th Ave

General purpose lane

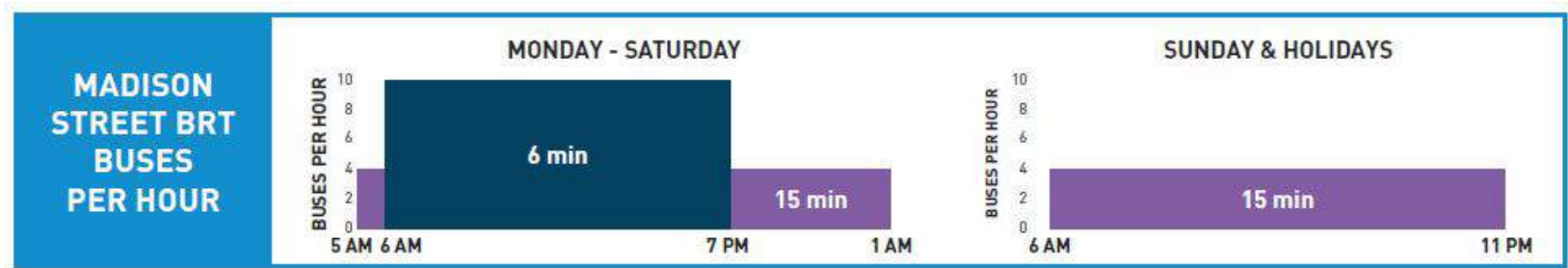


17th Ave – MLK

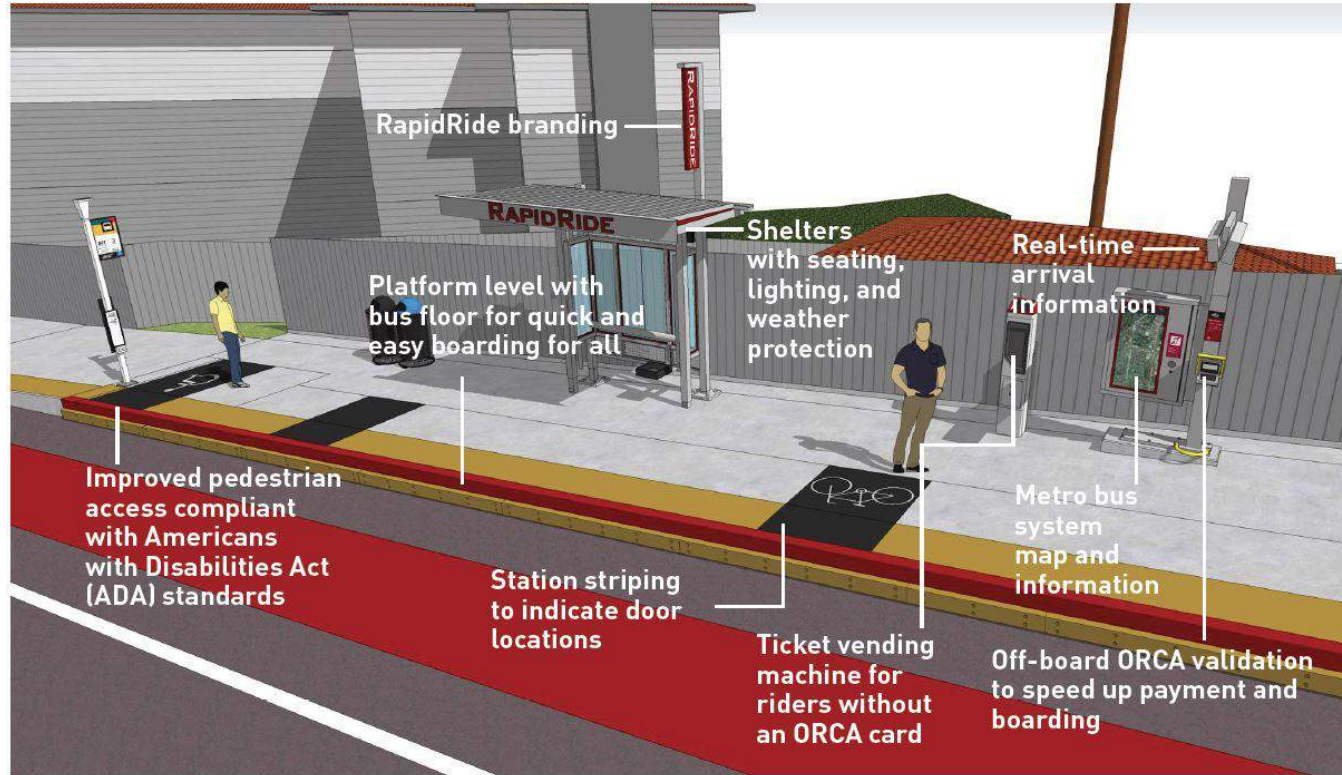
Capacity and efficiency

State-of-the-art buses:

- 60-foot articulated vehicles to move more people
- 5 doors for quick loading and unloading
- Transit signal priority
- Electric trolley - clean and quiet



Station features



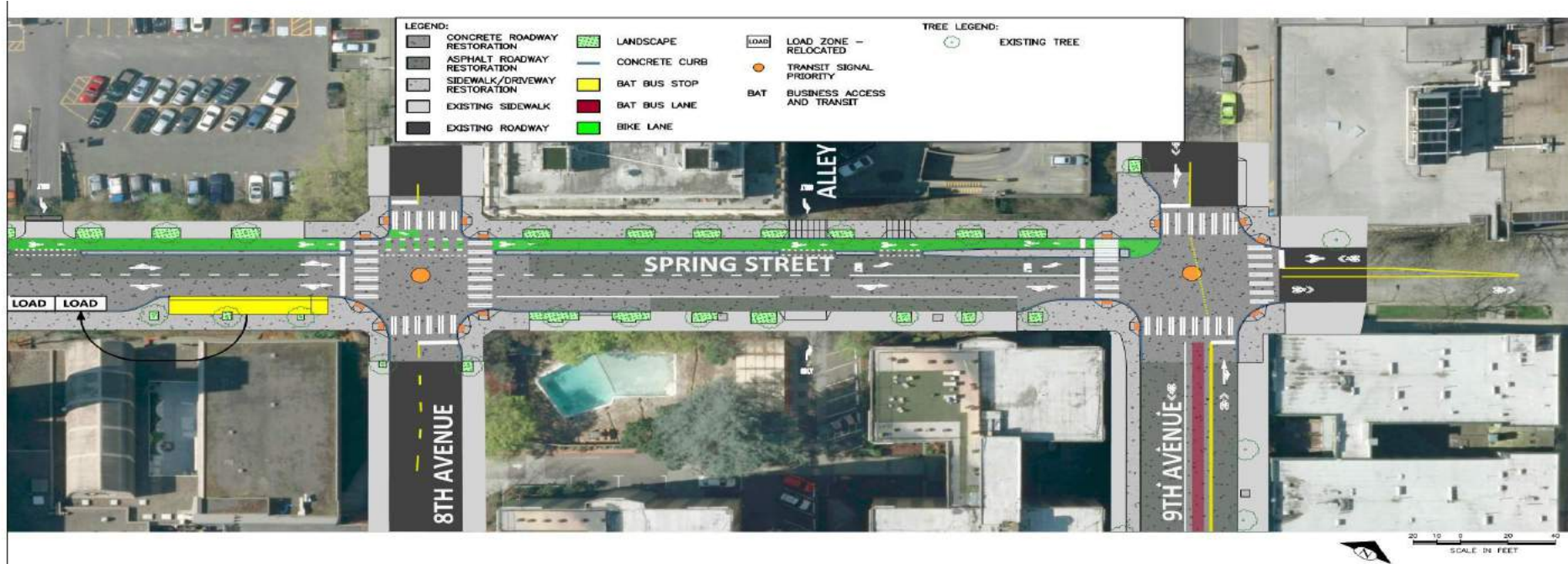
Recent milestones

- Held walking tours last summer with the community to help refine intersection designs at:
 - 12th Ave E and E Union St
 - 24th Ave E and E Madison St
- Updated design on Spring St between 7th Ave and 9th Ave
- FTA approved NEPA document

Spring St bike lane: 6th Ave to 7th Ave



Spring St bike lane: 8th Ave to 9th Ave



Looking ahead

- **Q1 2018:**
 - Issue SEPA determination for review and comment
 - Field work (i.e. potholing) as needed
 - Business outreach
 - Community outreach
- **Q2 2018:**
 - Final design
 - Community outreach to prepare for construction
 - Final construction documents
- **Q3 2018:**
 - Construction documents
 - Community outreach to prepare for construction
- **Q4 2018:**
 - Federal grant agreement
 - Community outreach to prepare for construction
- **2019 to late 2020:**



Questions?

MadisonBRT@seattle.gov

206-484-2780

Text “Madison” to 33222 to receive project alerts

www.seattle.gov/transportation



Seattle
Department of
Transportation

First Hill Updates



FIRST HILL
IMPROVEMENT ASSOCIATION



2017 ACCOMPLISHMENTS

- > 15 Mural Installation
- > Park to Park Path Planning
- > Signal Boxes Installed
- > Expanded programs
- > Recruited new members
- > WSCC Advocacy
- > 65% Design for First Hill Park
- > Retail focus group

BUILDING COMMUNITY AND BELONGING

FHIA works to create a strong, welcoming, and vibrant neighborhood for all people through:

- > programming
- > amenity
- > advocacy



A photograph of a parking garage with teal columns and a mural of a city skyline. A white Ford and a black Chevrolet are parked in the foreground.

DEVELOPING A SENSE OF PLACE

A man in a US Marine uniform, including a black cap with "U.S. MARINES" and "10-06" on it, a black jacket, and white trousers, is walking on a paved sidewalk. He is wearing a bright orange safety vest and carrying a large, full yellow plastic trash bag. The background features lush green trees and a concrete wall. The text "MAKING A DIRECT POSITIVE IMPACT" is overlaid in large white capital letters.

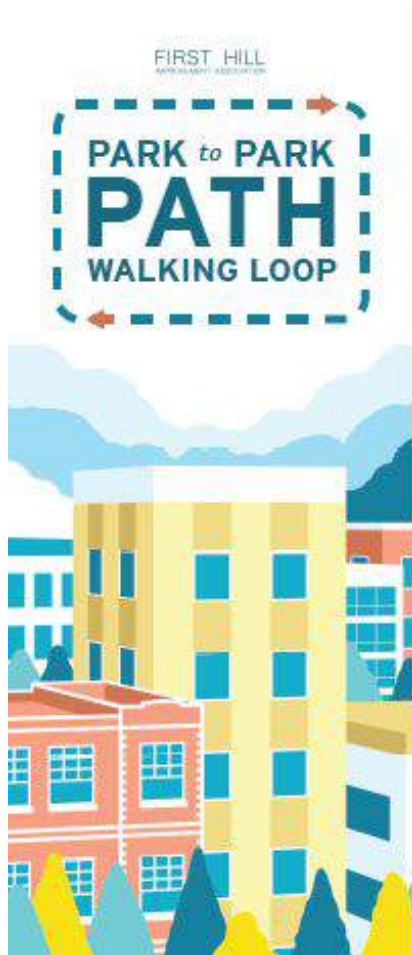
MAKING A DIRECT POSITIVE IMPACT



CREATING COMMUNITY AND IMPROVING SOCIAL WELLBEING

A photograph of a collaborative workspace. A large sheet of paper with a hand-drawn site plan or map is spread out on a table. The map features green areas, paths, and various geometric shapes. Numerous pink sticky notes are placed across the map, some with handwritten text. A black marker lies on the left side of the map. In the background, a person's hand is visible, holding a pink sticky note. The overall scene suggests a planning or brainstorming session.

FACILITATING EMPOWERMENT TO DEVELOP A SHARED VISION FOR THE FUTURE



> 1.5 mile walking loop connecting Freeway Park and Yesler Terrace Park along First Hill green streets

Signal Boxes

6 NEW BOXES COMING SOON!



First Hill Retail

Coming Soon!

- > Neon Taco @ Boren and Madison
- > Whole Foods @ Broadway and Madison

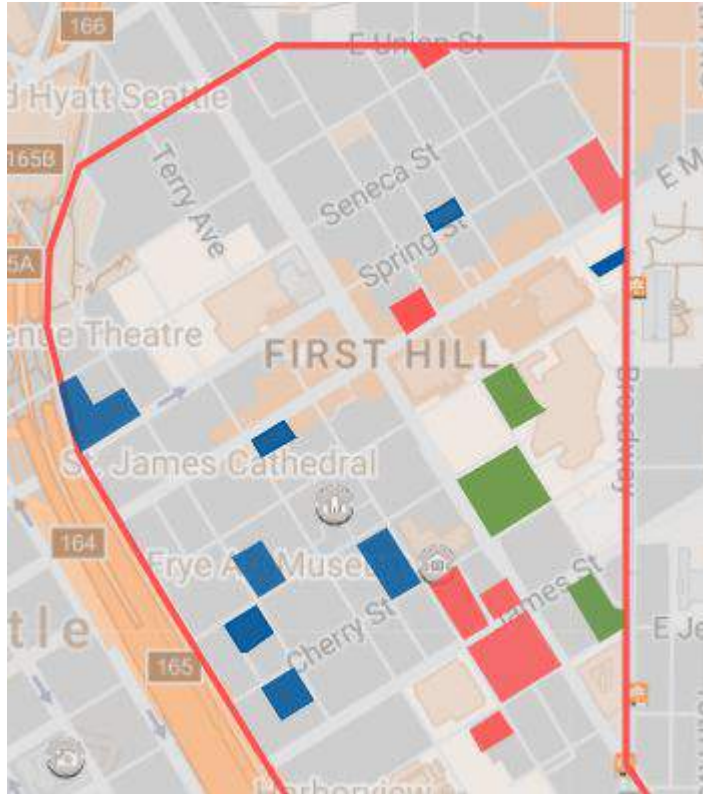


FIRST HILL
IMPROVEMENT ASSOCIATION

A map of the First Hill neighborhood in Seattle. The map shows a grid of streets including Terry Ave, Seneca St, Spring St, Cherry St, Alder St, 5th Ave, 6th Ave S, S Main St, E Madison St, E Jefferson St, 10th Ave, 11th Ave, 12th Ave, and Broadway. Landmarks such as St. James Cathedral, Frye Art Museum, Harborview Medical Center, and Seattle University are labeled. A red line outlines a specific area in the center of the map. Within and around this area, several blocks are highlighted in red, green, and blue. The red blocks are primarily in the center and south, green blocks are in the north and west, and blue blocks are in the west and south. The map also shows major highways like I-5 and I-90, and local roads like Yesler Way and Pike St.

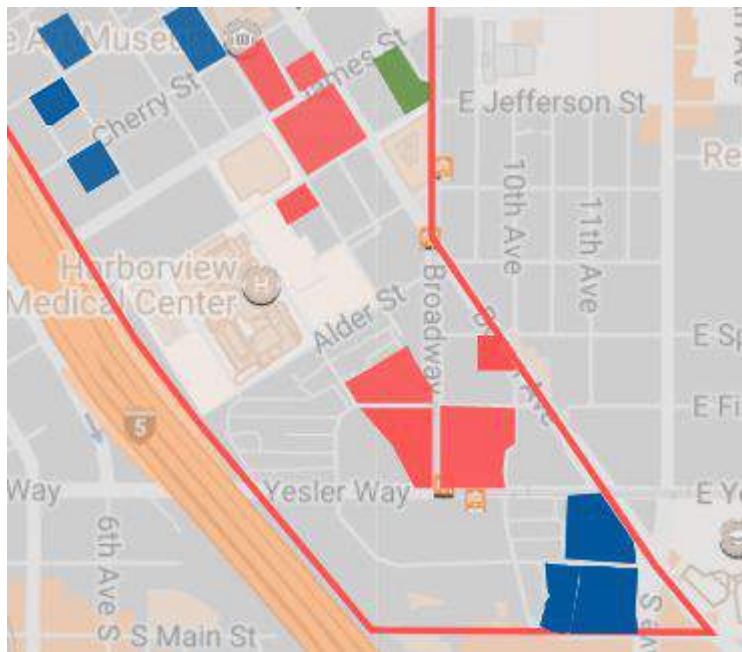
- > 23 projects planned or underway
- > 4,339 units
- > 6,509 new residents
- > 65% population increase

North of James



- > The Danforth (Broadway and Madison) *265 units**
- > 1320 University *36 units**
- > 1001 Minor Ave *205 units**
- > 1103 Summit Ave *90 units - In Design Review*
- > 1101 8th Ave *565 units**
- > 800 Columbia *287 units*
- > 715 8th Ave - 76 units - *In Design Review*
- > 615 8th Ave - 204 units - *In Design Review**
- > 707 Terry *440 units**
- > 620 Terry *237 units**
- > 1050 James *74 units - Leasing Underway*

South of James



- > 1001 James *325 units**
- > 423 Terry Ave *112 units*
- > 808 Fir *119 units*
- > 915 E Spruce *75 units*
- > 123 Broadway *194 units**
- > 120 Broadway *237 units**
- > 125 Boren Ave S *288 units*
- > 209 12th Ave. S *318 units**
- > 1020 S. Main St *192 units*

Your Voice Your Choice

**YOUR VOICE,
YOUR CHOICE!**



**PARKS
& STREETS**

Participatory budgeting initiative where Seattle residents democratically decide how to spend a portion of the City's budget on small-scale park and street improvements.

- > Benefits the public
- > Is a physical or capital improvement project in Seattle's parks or streets
- > Does not exceed \$90,000

Your Voice Your Choice

IDEA
COLLECTION



PROJECT
DEVELOPMENT



VOTING



FUND &
IMPLEMENT



IDEAS COLLECTED UNTIL FEB 2

Opportunities to guide the future!

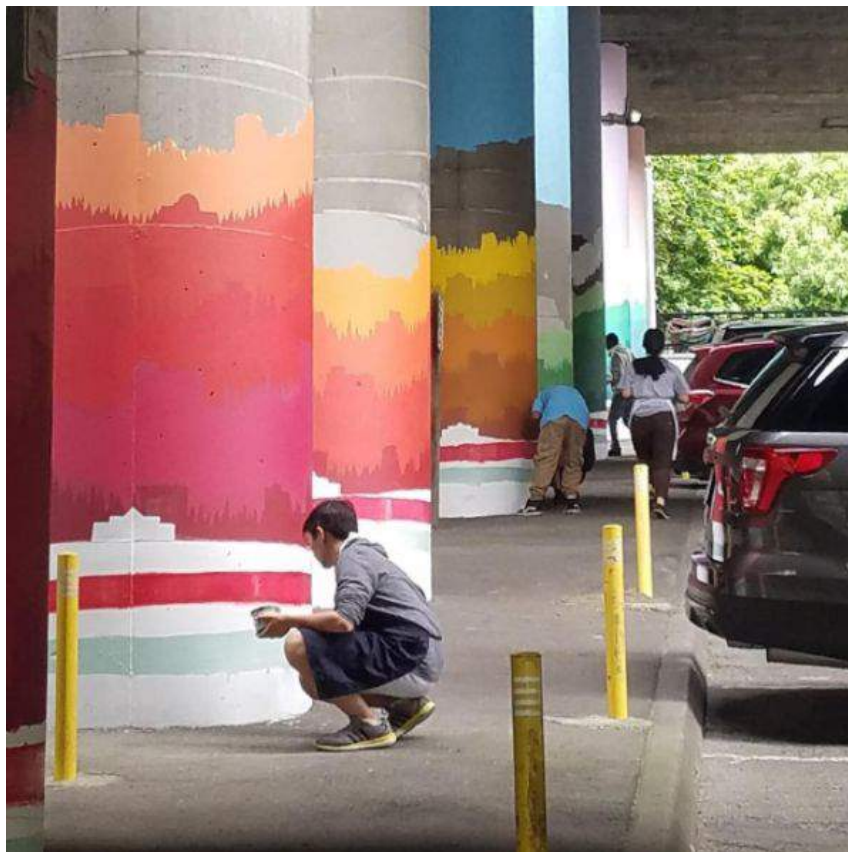


ST3 Advisory Committee



Swedish SAC

Upcoming Events



Sunlight Over First Hill Painting Party

Sunday January 14th

10am - 2pm *(or whenever we finish)*

**Under the Freeway between James
and Cherry Streets**

Everything provided!

Stay for as long as you can help!



3RD ANNUAL

FIRST HILL IMPROVEMENT ASSOCIATION
VALENTINE'S DAY PARTY

TUESDAY, FEBRUARY 7th | 6 - 8 PM
STIMSON-GREEN MANSION
1204 MINOR AVE

Other Events

- > Jan 10th - 615 8th Ave EDG - 6:30pm
- > Jan 18th - Yesler Terrace Tour - 1pm
- > Jan 26th - One Night Count - 12am
- > Feb 5th - FHIA Transportation Committee - 5:30pm
- > Feb 7th - FHIA Urban Design and Public Space Committee - 1pm



Questions? Comments?

Thank You for spending your evening with us!

*Working together to make First Hill
a great neighborhood for all!*

