

First Hill Public Meeting

May 2019

Agenda

- First Hill Development Update-
Doug Holtom
- First Hill Park - Mark Brands
- REACH - Brenda Frazier
- FHIA Update



FIRST HILL
IMPROVEMENT ASSOCIATION



Outreach & Care Coordination

Brenda Frazier
5/14/19

REACH

forging trust. fostering change.



REACH Mission:
**Joining with individuals through outreach,
relationship, advocacy, and bridging gaps, to
reduce harm and support healing.**



⁴**REACH Approach:**

Client-centered

Harm Reduction

Trauma-informed care

Motivational Interviewing

"I went from living in my car to having my own place. I now have my own job and a family. It's a whole 180 from where I was. I'm very grateful I found this place when I did." – REACH Client



“Client-Centered” Goals:

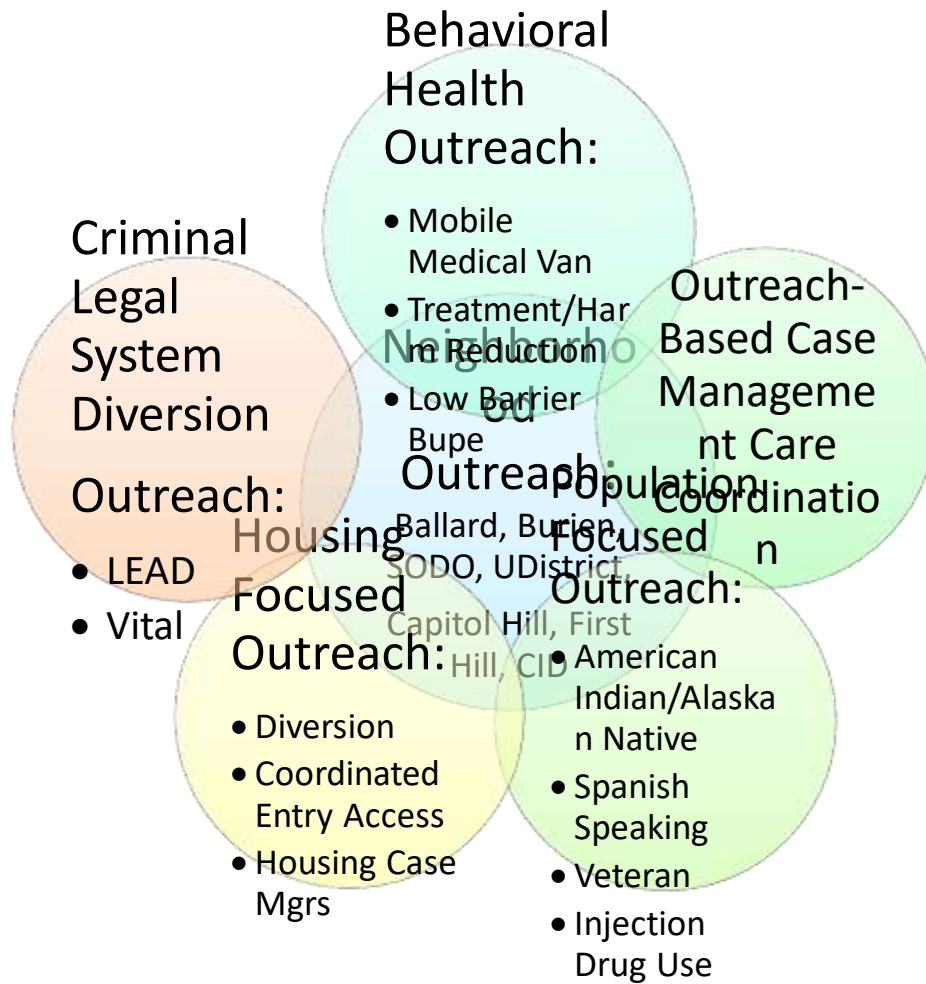
- Increase housing stability
- Improve health status
- Reduce harm associated with alcohol and other drug use
- Improve economic stability
- Improve quality of life



Outreach & Care Coordination

Specialties:

Native American/African American
People who inject drugs
Veterans
Women
Medical Respite Patients
Spanish Speaking/Latinx
People involved in street-based sex
work
Criminal Legal System Diversion/Reform
(LEAD & Vital)



A person wearing a high-visibility yellow jacket with a "REACH" patch on the sleeve is kneeling on a gravel surface next to an orange tent. They are holding a pen and writing in a small notebook. A black backpack is on the ground nearby. The tent has a white plastic cover on top. The background shows some rocks and a red object.

THANK YOU

www.etsreach.org

REACH

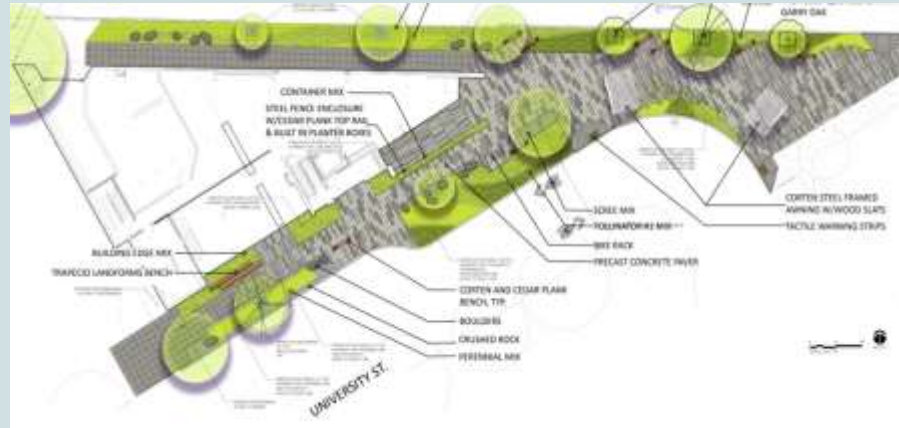
First Hill: Spring 2019 Development Run-Down



1320 University Street



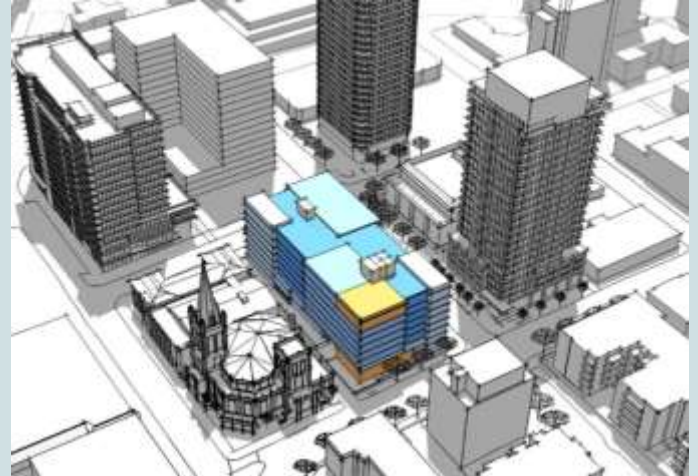
- 36 Apartment Units
- 12 Parking Spaces
- 4,655 Square Feet of Retail
- Pavement Park to be Remodeled (2,600 Square Feet)



1100 Boylston Avenue



- 226 Apartment Units
- 90 Parking Spaces
- 8 Stories
- In Early Design Guidance



1400 Madison Street



- 368 Affordable Units
- 17 Stories
- 5,300 Square Feet of Retail
- Community Room
- Staff Only Parking
- Estimated Completion: 2022

1400 Madison Street



1103 Summit Avenue



- 91 Efficiency Units
- 7 Stories
- Under Construction



1101 8th Avenue (Ovation)



- 548 Apartment Units
- 32 Stories
- 1,095 Square Feet of Retail
- 4,000 Square Feet of Restaurant
- 2,545 Square Feet of Office
- 436 Parking Spaces
- 5,500 Square Feet of Open Space

1101 8th Avenue (Ovation)



815 9th Avenue



- 275 Apartment Units
- 29 Stories
- 2,290 Square Feet of Retail
- 102 Parking Spaces



800 Columbia Street



- 287 Condo Units
- 30 Stories - Under Construction
- 8,800 Square Feet of Open Space
- 234 Parking Spaces

800 Columbia Street



715 8th Avenue (Olympic Tower)



- 76 Senior Housing Units
- 21 Stories
- 76 Parking Spaces
- Potential Skybridge



814 Columbia Street (Leighton)



- Renovation of 24 Existing Apartment Units
- 4 Stories

615 8th Avenue



- 226 Condo Units
- 26 Stories
 - 3 Floors for Trinity Church
- 230 Parking Spaces
- 3,800 Square Feet of Open Space

615 8th Avenue



714 7th Avenue



- 43 Efficiency Units
- 6 Stories



707 Terry Avenue



- 486 Apartment Units
- 2, 33-Story Towers
- 8,000 Square Feet of Retail
- 316 Parking Spaces
- Public Art Included

707 Terry Avenue



620 Terry Avenue (Murano)



- 237 Senior Housing Units
- 24 Stories
- 2,560 Square Feet of Retail
- 132 Parking Spaces
- Estimated completion:
June 2019

808 Fir Street (Red Cedar)



- 119 Affordable Units
 - Family Sized Units
- 7 Stories
- 74 Parking Spaces
- Private Interior Courtyard
- Terry Avenue Pedestrian Pathway - 3,600 Square Feet
- Recently Completed: May 2019

715 E. Spruce Street (Metroline Flats)



- 75 Apartment Units
- 7 Stories
- Recently Completed: May 2019

120 Broadway (Cypress)



- 237 Apartment Units
- 146 Parking Spaces
- Private Courtyard
- 5,800 Square Feet of Retail
- 17,600 Square Feet of Open Space
- Recently Completed: May 2019

1000 E. Yesler Way



- 280 Apartment Units
- 170 Parking Spaces
- Small Public Plaza



125 Boren Avenue South (Modera First Hill)



- 288 Apartment Units
- 203 Parking Spaces
- 8 Stories



725 Yesler Way



- 365 Apartment Units
- 2, 22-Story Towers
- 24,000 Square Feet of Retail

SECTION 07 / Architectural Massing Concepts

7.3 - Extending the Park (Preferred)



1020 South Main Street



- 214 Apartment Units
- 110 Parking Spaces
- 9 Stories
- 17,000 Square Feet of Open S



209 12th Avenue South



- 335 Apartment Units
- 192 Parking Spaces
- 7,200 Square Feet of Retail
- 9 Stories

1327 Minor Avenue



- 6 Townhomes
- 6 Parking Spaces



515 Minor Avenue



- 6 Stories
- 136,984 Square Feet of Medical Offices
- 274 Parking Spaces
- Master-Use Permit Issued

Swedish First Hill Expansion



- 2, 17 Story Medical Towers
- 1,700,000 Square Feet of Medical Use
- 600 Parking Spaces
- Estimated Completion: 2025

Swedish First Hill Expansion

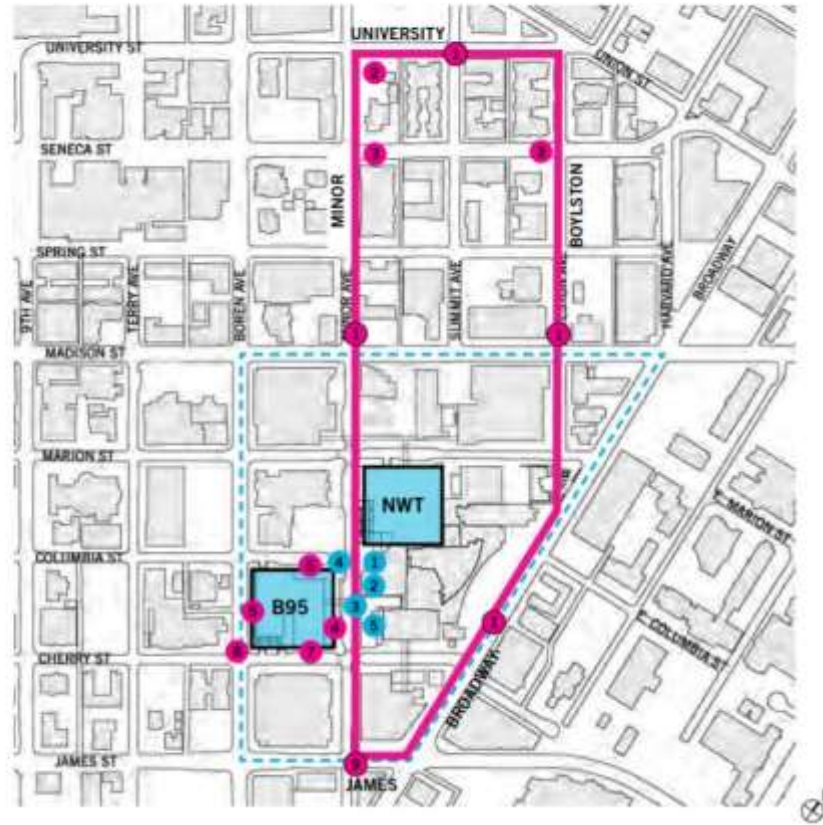
PUBLIC BENEFITS SUMMARY

BLOCK 95 ALLEY VACATION

- 1 The First Hill Mile
- 2 First Hill Park Funding
- 3 Public Art
- 4 Minor Ave Voluntary Setback
- 5 Boren Voluntary Setback
- 6 Columbia St ROW Enhancements
- 7 Cherry St ROW Enhancements
- 8 Boren & Cherry Ped Crossing
- 9 Minor & James Ped Crossing

MINOR AVE SKYBRIDGE

- 1 Minor Ave Garden
- 2 Public Art - Minor Ave Garden
- 3 Public Art - Skybridge
- 4 Minor & Columbia Raised Intersection
- 5 Minor Ave ROW Enhancements



First Hill Updates



FIRST HILL
IMPROVEMENT ASSOCIATION

Your Voice Your Choice

First Hill Improvement Association has submitted a Your Voice Your Choice proposal for street and sidewalk improvements to the intersection of Union, Minor and Bellevue. Help us get this proposal past the project development phase! Attend the District 3 meeting on May 30, 5:30 - 7:30pm at the Douglas-Truth Branch Library or vote online [here](#).

Your Voice, Your Choice: Parks & Streets is a participatory budgeting initiative in which Seattle residents democratically decide how to spend a portion of the City's budget on small-scale park and street improvements. A total of \$2 million has been allocated in the 2019 budget and residents can participate in the district where they live, work, go to school, receive services, or volunteer.

During Project Development, teams of community members will work together to evaluate and prioritize ideas, narrowing the list to 8-10 project ideas per Council District. Project Development will take place in May 2019.



Terry Avenue

The First Hill Public Realm Action Plan (PRAP) was finalized in 2015 with the goals of expanding the total area of public space through right-of-way reallocation, private development partnerships and site acquisition for open space.

The Terry Avenue Concept Plan, as identified in the PRAP, seeks to create 40,000 square feet of new open space along Terry Avenue by creating a pedestrian-priority street from Spring to Terrace Streets.

- Community Package Coalition
- Steering Committee
- Neighborhood Matching Fund

Terry Avenue - Spring to Terrace
Overall Concept Plan - Future Vision Section



FHIA Summer Events

- **First Hill Fidos** June 13th 6-8pm @ Freeway Park - Seneca Plaza
- **First Hill Tree Walk** Thursday, June 27th 6-8pm Starting at Freeway Park
- **First Hill Bingo** Thursday, July 11th 6-8pm @ Yesler Terrace Park
- **Taste of Yesler Terrace** Thursday August 8th 6-8pm @ Yesler Terrace 9th Avenue Pedestrian Pathway
- **Pop-Up Petting Zoo** Thursday August 22nd 6-8pm @ 9th & University Pavement Park
- **Outdoor Movie Night** Thursday September 6th 8-10pm @ Yesler Terrace Park

Upcoming Meetings

- **1100 Boylston Early Design Guidance** - Wednesday, May 15th 8:00pm
1000 E James Way, Seattle, WA 98122, USA Room 160
- **FHIA Transportation Committee Meeting** - Monday, June 3rd 5:30pm
@ Skyline
- **FHIA Urban Design & Public Space Committee Meeting** - Wednesday,
June 5th 1pm @ Horizon House